

For Research Use Only

# RCC1 Polyclonal antibody

Catalog Number: 22142-1-AP

7 Publications



## Basic Information

### Catalog Number:

22142-1-AP

### Size:

500 ug/ml

### Source:

Rabbit

### Isotype:

IgG

### Immunogen Catalog Number:

AG17569

### GenBank Accession Number:

BC010067

### GeneID (NCBI):

1104

### UNIPROT ID:

P18754

### Full Name:

regulator of chromosome condensation 1

### Calculated MW:

421 aa, 45 kDa

### Observed MW:

45-50 kDa

### Purification Method:

Antigen affinity purification

### Recommended Dilutions:

WB 1:1000-1:4000

IP 0.5-4.0 ug for 1.0-3.0 mg of total protein lysate

IHC 1:500-1:2000

IF/ICC 1:750-1:3000

## Applications

### Tested Applications:

WB, IHC, IF/ICC, IP, ELISA

### Cited Applications:

WB, IHC, IF

### Species Specificity:

human, mouse, monkey

### Cited Species:

human, mouse

**Note-IHC: suggested antigen retrieval with TE buffer pH 9.0; (\*) Alternatively, antigen retrieval may be performed with citrate buffer pH 6.0**

### Positive Controls:

**WB** : A431 cells, HEK-293 cells, NIH/3T3 cells, HepG2 cells, Jurkat cells, SH-SY5Y cells, COS-7 cells, HeLa cells, MCF-7 cells

**IP** : HEK-293 cells,

**IHC** : human stomach tissue, human small intestine tissue

**IF/ICC** : A431 cells,

## Background Information

CHC1, also named as RCC1, promotes the exchange of ran-bound gdp by gtp. It is involved in the regulation of onset of chromosome condensation in the S-phase. Phosphorylation of RCC1 on serines located in or near its nuclear localization signal activates RCC1 to generate RanGTP on mitotic chromosomes, which is required for spindle assembly and chromosome segregation. This antibody is a rabbit polyclonal antibody raised against residues near the C terminus of human RCC1.

## Notable Publications

Author	Pubmed ID	Journal	Application
Yudong Song	30241030	Biomaterials	WB
Diana Vargas-Hurtado	31495584	Curr Biol	IF
Lijun Qiao	29789527	Cell Death Dis	IHC

## Storage

### Storage:

Store at -20°C. Stable for one year after shipment.

### Storage Buffer:

PBS with 0.02% sodium azide and 50% glycerol pH 7.3.

Aliquoting is unnecessary for -20°C storage

For technical support and original validation data for this product please contact:

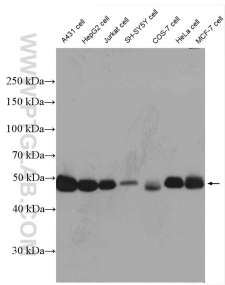
T: 4006900926

E: [Proteintech-CN@ptglab.com](mailto:Proteintech-CN@ptglab.com)

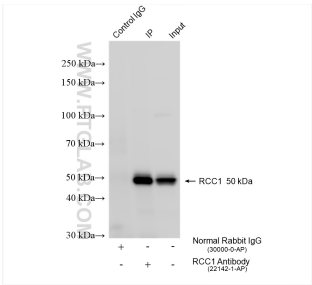
W: [ptgcn.com](http://ptgcn.com)

**This product is exclusively available under Proteintech Group brand and is not available to purchase from any other manufacturer.**

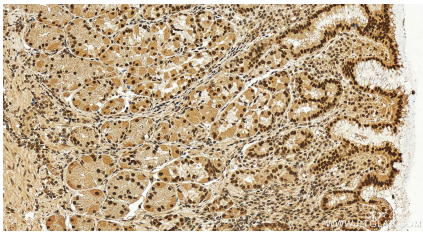
Selected Validation Data



Various lysates were subjected to SDS PAGE followed by western blot with 22142-1-AP (RCC1 antibody) at dilution of 1:2000 incubated at room temperature for 1.5 hours.



IP result of anti-RCC1 (IP:22142-1-AP, 4ug; Detection:22142-1-AP 1:8000) with HEK-293 cells lysate 1360 ug.



Immunohistochemical analysis of paraffin-embedded human stomach tissue slide using 22142-1-AP (RCC1 antibody) at dilution of 1:1000 (under 20x lens). Heat mediated antigen retrieval with Tris-EDTA buffer (pH 9.0).



Immunofluorescent analysis of (4% PFA) fixed A431 cells using RCC1 antibody (22142-1-AP) at dilution of 1:1500 and CoraLite®594-Conjugated Goat Anti-Rabbit IgG(H+L) (SA00013-4), CL488-Phalloidin (green).