

For Research Use Only

RYK Polyclonal antibody

Catalog Number: 22138-1-AP

Featured Product

3 Publications



Basic Information

Catalog Number:

22138-1-AP

Size:

450 µg/ml

Source:

Rabbit

Isotype:

IgG

Immunogen Catalog Number:

AG17540

GenBank Accession Number:

BC153090

GeneID (NCBI):

6259

UNIPROT ID:

P34925

Full Name:

RYK receptor-like tyrosine kinase

Calculated MW:

610 aa, 68 kDa

Observed MW:

67-75 kDa

Purification Method:

Antigen affinity purification

Recommended Dilutions:

WB 1:500-1:2000

IHC 1:20-1:200

IF/ICC 1:20-1:200

Applications

Tested Applications:

IF/ICC, IHC, WB, ELISA

Cited Applications:

WB

Species Specificity:

human, mouse, rat

Cited Species:

human, mouse

Note-IHC: suggested antigen retrieval with TE buffer pH 9.0; (*) Alternatively, antigen retrieval may be performed with citrate buffer pH 6.0

Positive Controls:

WB : Jurkat cells, A549 cells, mouse brain tissue, SH-SY5Y cells

IHC : human kidney tissue, human ovary tissue

IF/ICC : SH-SY5Y cells,

Background Information

Notable Publications

Author	Pubmed ID	Journal	Application
Yitian Lu	36071475	J Neuroinflammation	WB
Zhaoyi Liang	36210461	Cell Mol Biol Lett	WB
Ricardo D Gonzalez	37242509	Pharmaceuticals (Basel)	WB

Storage

Storage:

Store at -20°C. Stable for one year after shipment.

Storage Buffer:

PBS with 0.02% sodium azide and 50% glycerol pH 7.3.

Aliquoting is unnecessary for -20°C storage

For technical support and original validation data for this product please contact:

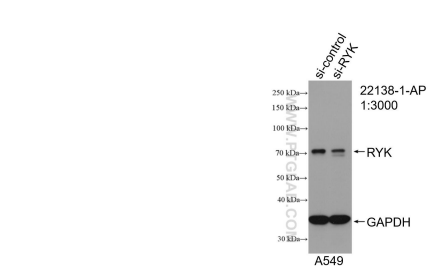
T: 4006900926

E: Proteintech-CN@ptglab.com

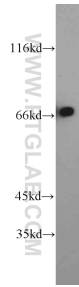
W: ptgcn.com

This product is exclusively available under Proteintech Group brand and is not available to purchase from any other manufacturer.

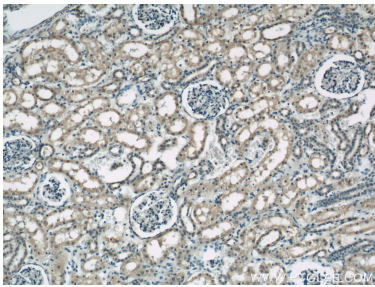
Selected Validation Data



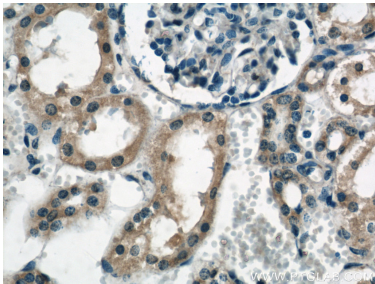
WB result of RYK antibody (22138-1-AP; 1:3000; incubated at room temperature for 1.5 hours) with sh-Control and sh-RYK transfected A549 cells.



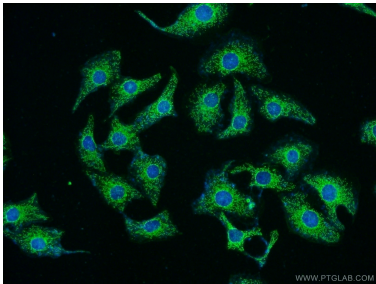
Jurkat cells were subjected to SDS PAGE followed by western blot with 22138-1-AP (RYK antibody) at dilution of 1:1000 incubated at room temperature for 1.5 hours.



Immunohistochemical analysis of paraffin-embedded human kidney using 22138-1-AP (RYK antibody) at dilution of 1:50 (under 10x lens).



Immunohistochemical analysis of paraffin-embedded human kidney using 22138-1-AP (RYK antibody) at dilution of 1:50 (under 40x lens).



Immunofluorescent analysis of SH-SY5Y cells using 22138-1-AP (RYK antibody) at dilution of 1:50 and Alexa Fluor 488-conjugated AffiniPure Goat Anti-Rabbit IgG(H+L).