

For Research Use Only

# TBC1D1 Polyclonal antibody

Catalog Number: 22124-1-AP

Featured Product

11 Publications



## Basic Information

**Catalog Number:**

22124-1-AP

**Size:**

750 µg/ml

**Source:**

Rabbit

**Isotype:**

IgG

**Immunogen Catalog Number:**

AG5406

**GenBank Accession Number:**

BC050321

**GeneID (NCBI):**

23216

**UNIPROT ID:**

Q86T10

**Full Name:**

TBC1 (tre-2/USP6, BUB2, cdc16) domain family, member 1

**Calculated MW:**

133 kDa

**Observed MW:**

150-165 kDa

**Purification Method:**

Antigen affinity purification

**Recommended Dilutions:**

WB 1:1000-1:4000

IP 0.5-4.0 µg for 1.0-3.0 mg of total protein lysate

IHC 1:50-1:500

## Applications

**Tested Applications:**

WB, IP, IHC, ELISA

**Cited Applications:**

WB, IHC, IP

**Species Specificity:**

human, mouse

**Cited Species:**

human, mouse

**Note-IHC: suggested antigen retrieval with TE buffer pH 9.0; (\*) Alternatively, antigen retrieval may be performed with citrate buffer pH 6.0**

**Positive Controls:**

WB: LNCaP cells, HeLa cells, HEK-293T cells, Jurkat cells, MCF-7 cells

IP: Jurkat cells,

IHC: mouse kidney tissue, human testis tissue, human kidney tissue

## Background Information

### Notable Publications

Author	Pubmed ID	Journal	Application
Magnus R Larsen	32916040	J Physiol	WB
Hiroyasu Hatakeyama	30482843	J Biol Chem	
Zejun Mo	30733181	J Pharmacol Sci	WB

## Storage

**Storage:**

Store at -20°C. Stable for one year after shipment.

**Storage Buffer:**

PBS with 0.02% sodium azide and 50% glycerol pH 7.3.

Aliquoting is unnecessary for -20°C storage

For technical support and original validation data for this product please contact:

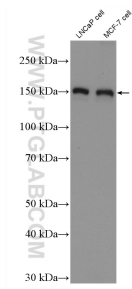
T: 4006900926

E: Proteintech-CN@ptglab.com

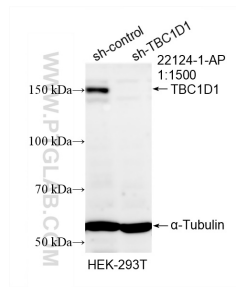
W: ptgcn.com

**This product is exclusively available under Proteintech Group brand and is not available to purchase from any other manufacturer.**

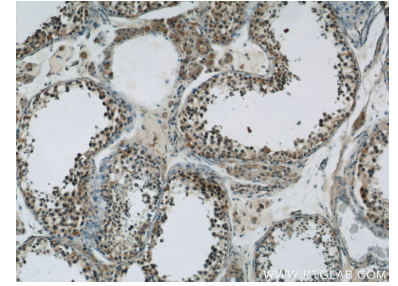
## Selected Validation Data



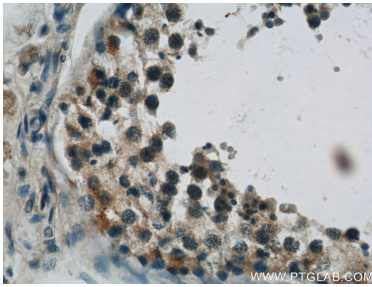
Various lysates were subjected to SDS PAGE followed by western blot with 22124-1-AP (TBC1D1 antibody) at dilution of 1:2000 incubated at room temperature for 1.5 hours.



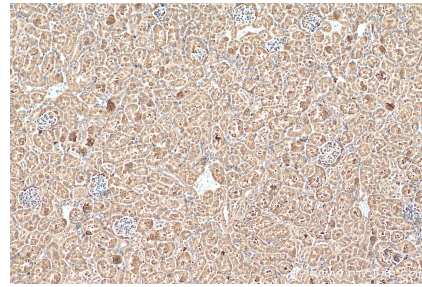
WB result of TBC1D1 antibody (22124-1-AP; 1:1500; incubated at room temperature for 1.5 hours) with sh-Control and sh-TBC1D1 transfected HEK-293T cells.



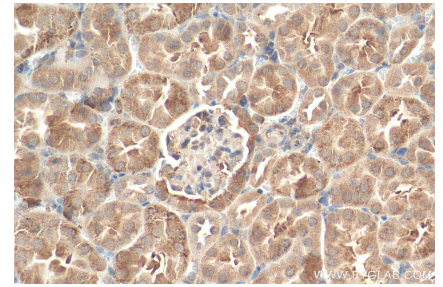
Immunohistochemical analysis of paraffin-embedded human testis slide using 22124-1-AP (TBC1D1 Antibody) at dilution of 1:50.



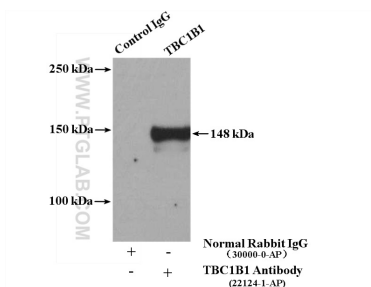
Immunohistochemical analysis of paraffin-embedded human testis slide using 22124-1-AP (TBC1D1 Antibody) at dilution of 1:50.



Immunohistochemical analysis of paraffin-embedded mouse kidney tissue slide using 22124-1-AP (TBC1D1 antibody) at dilution of 1:200 (under 10x lens). Heat mediated antigen retrieval with Tris-EDTA buffer (pH 9.0).



Immunohistochemical analysis of paraffin-embedded mouse kidney tissue slide using 22124-1-AP (TBC1D1 antibody) at dilution of 1:200 (under 40x lens). Heat mediated antigen retrieval with Tris-EDTA buffer (pH 9.0).



IP result of anti-TBC1D1 (IP:22124-1-AP, 4ug; Detection:22124-1-AP 1:1000) with Jurkat cells lysate 2400ug.