

For Research Use Only

INSIG1 Polyclonal antibody

Catalog Number: 22115-1-AP

Featured Product

8 Publications



Basic Information

Catalog Number: 22115-1-AP	GenBank Accession Number: BC001880	Purification Method: Antigen affinity purification
Size: 307 µg/ml	GeneID (NCBI): 3638	Recommended Dilutions: WB 1:500-1:2000 IHC 1:20-1:200
Source: Rabbit	UNIPROT ID: O15503	
Isotype: IgG	Full Name: insulin induced gene 1	
Immunogen Catalog Number: AG17420	Calculated MW: 277 aa, 30 kDa	
	Observed MW: 28-31 kDa, 66-70 kDa	

Applications

Tested Applications: IHC, WB, ELISA	Positive Controls: WB : A549 cells, HepG2 cells, SGC-7901 cells, MCF-7 cells IHC : human liver tissue, human kidney tissue
Cited Applications: WB, IF, IHC	
Species Specificity: human	
Cited Species: human	
Note-IHC: suggested antigen retrieval with TE buffer pH 9.0; (*) Alternatively, antigen retrieval may be performed with citrate buffer pH 6.0	

Background Information

Insulin-induced genes (INSIGs), which consist of two isoforms (INSIG1 and INSIG2), are representative endoplasmic reticulum (ER)-resident oxysterol-binding proteins (OSBPs). INSIG1 is part of negative regulatory feedback, acting as a brake on SREBP transcriptional function (PMID: 23919961). INSIG1 also has a secondary function mediating sterol accelerated proteolytic degradation of HMG CoA reductase, thus impacting the mevalonate pathway. Suppression of INSIG1 function promotes hepatic lipid remodelling and restrains NASH (non-alcoholic steatohepatitis) progression (PMID: 33722690).

Notable Publications

Author	Pubmed ID	Journal	Application
H L Cai	26485545	Transl Psychiatry	WB
Yingying Xu	34622799	JCI Insight	IF
Yingchun Wang	36450259	Cell Rep	WB

Storage

Storage:
Store at -20°C. Stable for one year after shipment.
Storage Buffer:
PBS with 0.02% sodium azide and 50% glycerol pH 7.3.
Aliquoting is unnecessary for -20°C storage

For technical support and original validation data for this product please contact:

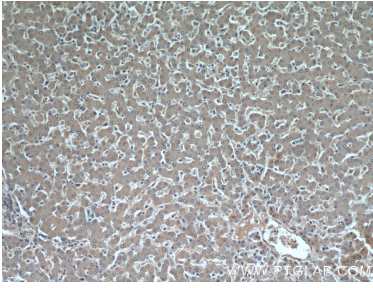
T: 4006900926

E: Proteintech-CN@ptglab.com

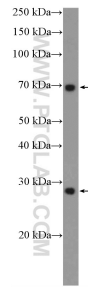
W: ptgcn.com

This product is exclusively available under Proteintech Group brand and is not available to purchase from any other manufacturer.

Selected Validation Data



Immunohistochemical analysis of paraffin-embedded human liver using 22115-1-AP (INSIG1 antibody) at dilution of 1:50 (under 10x lens).



A549 cells were subjected to SDS PAGE followed by western blot with 22115-1-AP (INSIG1 Antibody) at dilution of 1:1000 incubated at room temperature for 1.5 hours.