

For Research Use Only

# FAM167A Polyclonal antibody

Catalog Number: 22106-1-AP



## Basic Information

Catalog Number:

22106-1-AP

Size:

1000 µg/ml

Source:

Rabbit

Isotype:

IgG

Immunogen Catalog Number:

AG17336

GenBank Accession Number:

BC104041

GeneID (NCBI):

83648

UNIPROT ID:

Q96KS9

Full Name:

family with sequence similarity 167, member A

Calculated MW:

214 aa, 24 kDa

Observed MW:

25 kDa

Purification Method:

Antigen affinity purification

Recommended Dilutions:

WB 1:1000-1:6000

## Applications

Tested Applications:

WB, ELISA

Species Specificity:

human

Positive Controls:

WB : U-87 MG cells,

## Background Information

Family with sequence similarity 167, member A (FAM167A) has ubiquitously low expression in all tissues types throughout the body. In mouse it has a higher expression in the skin, B-cells, and spleen, but the same low expression in all other cell types. It's reported that FAM167A acts as an essential factor for BCR-ABL-independent TKI resistance in CML by activating the noncanonical NF- $\kappa$ B pathway.(PMID: 35241148)

## Storage

Storage:

Store at -20°C. Stable for one year after shipment.

Storage Buffer:

PBS with 0.02% sodium azide and 50% glycerol pH 7.3.

Aliquoting is unnecessary for -20°C storage

For technical support and original validation data for this product please contact:

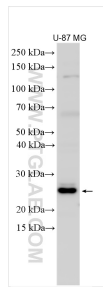
T: 4006900926

E: [Proteintech-CN@ptglab.com](mailto:Proteintech-CN@ptglab.com)

W: [ptgcn.com](http://ptgcn.com)

This product is exclusively available under Proteintech Group brand and is not available to purchase from any other manufacturer.

## Selected Validation Data



Various lysates were subjected to SDS PAGE followed by western blot with 22106-1-AP (FAM167A antibody) at dilution of 1:3000 incubated at room temperature for 1.5 hours.