

For Research Use Only

# RBM22 Polyclonal antibody

Catalog Number: 22103-1-AP



## Basic Information

<b>Catalog Number:</b> 22103-1-AP	<b>GenBank Accession Number:</b> BC003402	<b>Purification Method:</b> Antigen affinity purification
<b>Size:</b> 500 µg/ml	<b>GeneID (NCBI):</b> 55696	<b>Recommended Dilutions:</b> WB 1:2000-1:10000
<b>Source:</b> Rabbit	<b>UNIPROT ID:</b> Q9NW64	
<b>Isotype:</b> IgG	<b>Full Name:</b> RNA binding motif protein 22	
<b>Immunogen Catalog Number:</b> AG17315	<b>Calculated MW:</b> 420 aa, 47 kDa	
	<b>Observed MW:</b> 47-50 kDa	

## Applications

<b>Tested Applications:</b> WB, ELISA	<b>Positive Controls:</b> WB : NIH/3T3 cells, Raji cells
<b>Species Specificity:</b> human, mouse, rat	

## Background Information

RBM22 is mainly involved in pre-mRNA splicing, playing the essential role of maintaining the conformation of the catalytic core of the spliceosome and acting as a bridge between the catalytic core and other essential protein components of the spliceosome. RBM22 is also involved in gene regulation, and is able to bind DNA, acting as a bona fide transcription factor on a large number of target genes. Due to its wide scope in the regulation of gene expression, RBM22 has been associated with several pathologies and, notably, with the aggressiveness of cancer cells and with the phenotype of a myelodysplastic syndrome. (PMID: 35158909)

## Storage

**Storage:**  
Store at -20°C. Stable for one year after shipment.  
**Storage Buffer:**  
PBS with 0.02% sodium azide and 50% glycerol pH 7.3.  
Aliquoting is unnecessary for -20°C storage

For technical support and original validation data for this product please contact:

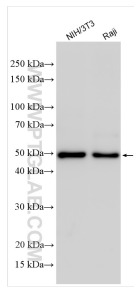
T: 4006900926

E: [Proteintech-CN@ptglab.com](mailto:Proteintech-CN@ptglab.com)

W: [ptgcn.com](http://ptgcn.com)

**This product is exclusively available under Proteintech Group brand and is not available to purchase from any other manufacturer.**

## Selected Validation Data



Various lysates were subjected to SDS PAGE followed by western blot with 22103-1-AP (RBM22 antibody) at dilution of 1:5000 incubated at room temperature for 1.5 hours.