

POMC Polyclonal antibody

Catalog Number: 22102-1-AP

Basic Information

Catalog Number: 22102-1-AP	GenBank Accession Number: BC065832	Purification Method: Antigen affinity purification
Size: 500 ug/ml	GeneID (NCBI): 5443	Recommended Dilutions: WB 1:500-1:1000
Source: Rabbit	UNIPROT ID: P01189	IHC 1:50-1:500
Isotype: IgG	Full Name: proopiomelanocortin	IF/ICC 1:50-1:500
Immunogen Catalog Number: AG17311	Calculated MW: 267 aa, 29 kDa	
	Observed MW: 35 kDa	

Applications

Tested Applications:
WB, IHC, IF/ICC, ELISA

Species Specificity:
human, mouse

Note-IHC: suggested antigen retrieval with **TE buffer pH 9.0; (*) Alternatively, antigen retrieval may be performed with citrate buffer pH 6.0**

Positive Controls:

WB : mouse pituitary gland tissue, Transfected HEK-293 cells

IHC : human pituitary tissue,

IF/ICC : HeLa cells,

Background Information

Pro-opiomelanocortin (POMC) is a prohormone that encodes multiple smaller peptide hormones within its structure. POMC plays important roles in many pathological and physiological processes, including regulating energy metabolism, immune reactions, and sexual functions. POMC expression differs quantitatively and qualitatively among most normal tissues. The large molecule of POMC is the source of several important biologically active substances. POMC can be cleaved enzymatically into the following peptides: d NPP, γ -MSH, ACTH, α -MSH, CLIP, Lipotropin β , Lipotropin γ , β -MSH, β endorphin and Met-enkephalin.

Storage

Storage:

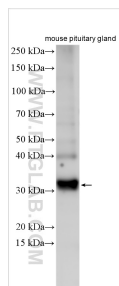
Store at -20°C. Stable for one year after shipment.

Storage Buffer:

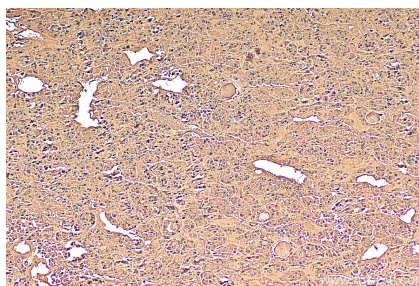
PBS with 0.02% sodium azide and 50% glycerol pH 7.3.

Aliquoting is unnecessary for -20°C storage

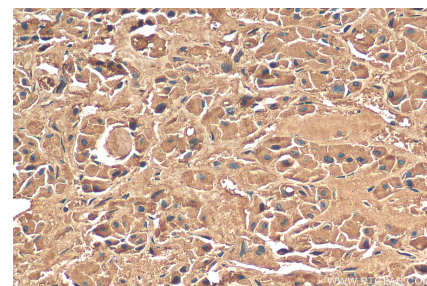
Selected Validation Data



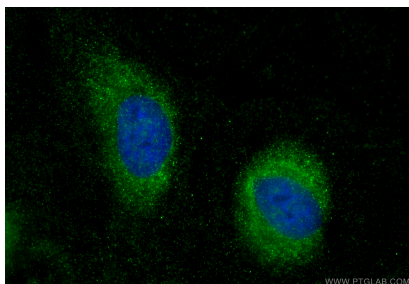
Various lysates were subjected to SDS PAGE followed by western blot with 22102-1-AP (POMC antibody) at dilution of 1:500 incubated at room temperature for 1.5 hours.



Immunohistochemical analysis of paraffin-embedded human pituitary tissue slide using 22102-1-AP (POMC antibody) at dilution of 1:200 (under 10x lens). Heat mediated antigen retrieval with Tris-EDTA buffer (pH 9.0).



Immunohistochemical analysis of paraffin-embedded human pituitary tissue slide using 22102-1-AP (POMC antibody) at dilution of 1:200 (under 40x lens). Heat mediated antigen retrieval with Tris-EDTA buffer (pH 9.0).



Immunofluorescent analysis of (-20°C Ethanol) fixed HeLa cells using POMC antibody (22102-1-AP) at dilution of 1:200 and Multi-rAb CoraLite® Plus 488-Goat Anti-Rabbit Recombinant Secondary Antibody (H+L) (RGAR002).