

For Research Use Only

ISG20 Polyclonal antibody

Catalog Number: 22097-1-AP

Featured Product

16 Publications



Basic Information

Catalog Number:

22097-1-AP

Concentration:

400 µg/ml

Source:

Rabbit

Isotype:

IgG

Immunogen Catalog Number:

AG17303

GenBank Accession Number:

BC007922

GeneID (NCBI):

3669

UNIPROT ID:

Q96AZ6

Full Name:

interferon stimulated exonuclease
gene 20kDa

Calculated MW:

181 aa, 20 kDa

Observed MW:

20 kDa

Purification Method:

Antigen affinity purification

Recommended Dilutions:

WB 1:500-1:2000

IHC 1:20-1:200

Applications

Tested Applications:

WB, IHC, ELISA

Cited Applications:

WB, IHC, IF, CoIP

Species Specificity:

human, mouse, rat

Cited Species:

human, mouse, canine, monkey

Positive Controls:

WB: Raji cells, Daudi cells

IHC: human colon tissue,

**Note-IHC: suggested antigen retrieval with
TE buffer pH 9.0; (*) Alternatively, antigen
retrieval may be performed with citrate
buffer pH 6.0**

Background Information

Notable Publications

Author	Pubmed ID	Journal	Application
Nannan Wu	31600344	PLoS Pathog	WB
Zilin Qiao	36423196	Viruses	WB
Priscila El Kazzi	36354007	Nucleic Acids Res	WB

Storage

Storage:

Store at -20°C. Stable for one year after shipment.

Storage Buffer:

PBS with 0.02% sodium azide and 50% glycerol pH 7.3.

Aliquoting is unnecessary for -20°C storage

For technical support and original validation data for this product please contact:

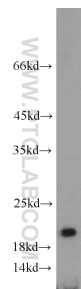
T: 4006900926

E: Proteintech-CN@ptglab.com

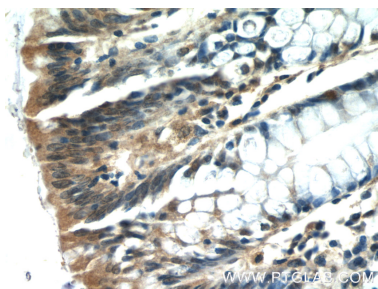
W: ptgcn.com

This product is exclusively available under Proteintech Group brand and is not available to purchase from any other manufacturer.

Selected Validation Data



Raji cells were subjected to SDS PAGE followed by western blot with 22097-1-AP (ISG20 antibody) at dilution of 1:1000 incubated at room temperature for 1.5 hours.



Immunohistochemical analysis of paraffin-embedded human colon tissue slide using 22097-1-AP (ISG20 Antibody) at dilution of 1:50 (under 40x lens).

Various lysates were subjected to SDS PAGE followed by western blot with 22097-1-AP (ISG20 antibody) at dilution of 1:2500 incubated at room temperature for 1.5 hours.