

For Research Use Only

TXLNB Polyclonal antibody, PBS Only

Catalog Number:22090-1-PBS



Basic Information

Catalog Number: 22090-1-PBS	GenBank Accession Number: BC115383	Purification Method: Antigen affinity purification
Concentration: 1 mg/ml	GeneID (NCBI): 167838	
Source: Rabbit	UNIPROT ID: Q8N3L3	
Isotype: IgG	Full Name: taxilin beta	
Immunogen Catalog Number: AG17295	Calculated MW: 684 aa, 77 kDa	
	Observed MW: 75 kDa	

Applications

Tested Applications:
WB, Indirect ELISA

Species Specificity:
human, mouse

Background Information

TXLNB (Taxilin beta, gliding protein beta) is a protein enriched predominantly in cardiomyocytes and belongs to the centrosome articulating protein family. It is localized in the perinuclear region of the centrosome and is closely associated with the microtubule organizing center (MTOC) and the ubiquitin-proteasome system (UPS). TXLNB plays an important role in protein homeostasis in cardiomyocytes, affecting intracellular protein degradation and quality control by regulating the interactions between centrosomes and proteasomes. TXLNB was found to have a key role in cardiomyocyte hypertrophy and cardiac proteotoxicity, and its overexpression enhances proteasome activity and reduces the accumulation of ubiquitylated proteins, whereas knockdown leads to proteasome insufficiency and a decline in cardiac function with age. In addition, TXLNB may be involved in the dynamic regulation of the cytoskeleton and microtubules.

Storage

Storage:
Store at -80°C.
The product is shipped with ice packs. Upon receipt, store it immediately at -80°C

Storage Buffer:
PBS Only

For technical support and original validation data for this product please contact:

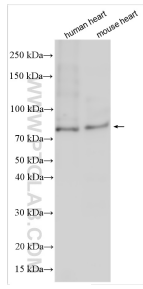
T: 4006900926

E: Proteintech-CN@ptglab.com

W: ptgcn.com

This product is exclusively available under Proteintech Group brand and is not available to purchase from any other manufacturer.

Selected Validation Data



Various lysates were subjected to SDS PAGE followed by western blot with 22090-1-AP (TXLNB antibody) at dilution of 1:1500 incubated at room temperature for 1.5 hours. This data was developed using the same antibody clone with 22090-1-PBS in a different storage buffer formulation.