

For Research Use Only

CCR10 Polyclonal antibody

Catalog Number: 22071-1-AP

4 Publications



Basic Information

Catalog Number:

22071-1-AP

Size:

850 ug/ml

Source:

Rabbit

Isotype:

IgG

Immunogen Catalog Number:

AG17212

GenBank Accession Number:

BC099840

GeneID (NCBI):

2826

UNIPROT ID:

P46092

Full Name:

chemokine (C-C motif) receptor 10

Calculated MW:

362 aa, 38 kDa

Observed MW:

38-42 kDa

Purification Method:

Antigen affinity purification

Recommended Dilutions:

WB 1:500-1:2000

IHC 1:20-1:200

Applications

Tested Applications:

WB, IHC, ELISA

Cited Applications:

WB, IHC

Species Specificity:

human, mouse, rat

Cited Species:

human, mouse

Note-IHC: suggested antigen retrieval with TE buffer pH 9.0; (*) Alternatively, antigen retrieval may be performed with citrate buffer pH 6.0

Positive Controls:

WB : mouse brain tissue, rat brain tissue

IHC : human spleen tissue,

Background Information

CCR10 (also known as GPR2) is a G-protein coupled receptor for chemokines CCL27 (SCYA27) and CCL28 (SCYA28). CCR10-CCL27 interactions are involved in T cell-mediated skin inflammation (PMID: 11821900). CCR10-CCL28 interactions are thought to contribute to the accumulation of IgA Ab-secreting cells (ASC) on mucosal surfaces.

Notable Publications

Author	Pubmed ID	Journal	Application
Zhenzhen Hui	33868236	Front Immunol	WB
YINGTING WU	34913072	Mol Med Rep	IHC
Nana Tao	38191481	Inflamm Regen	IHC

Storage

Storage:

Store at -20°C. Stable for one year after shipment.

Storage Buffer:

PBS with 0.02% sodium azide and 50% glycerol pH 7.3.

Aliquoting is unnecessary for -20°C storage

For technical support and original validation data for this product please contact:

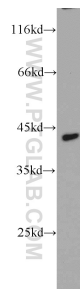
T: 4006900926

E: Proteintech-CN@ptglab.com

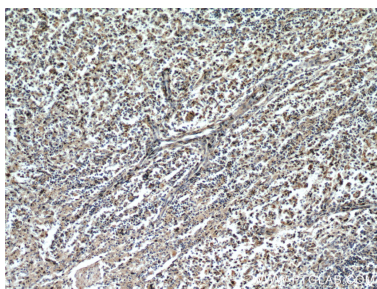
W: ptgcn.com

This product is exclusively available under Proteintech Group brand and is not available to purchase from any other manufacturer.

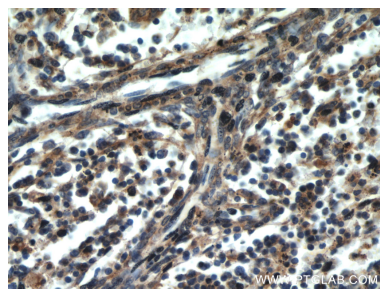
Selected Validation Data



mouse brain tissue were subjected to SDS PAGE followed by western blot with 22071-1-AP (CCR10 antibody) at dilution of 1:1000 incubated at room temperature for 1.5 hours.



Immunohistochemical analysis of paraffin-embedded human spleen using 22071-1-AP (CCR10 antibody) at dilution of 1:50 (under 10x lens).



Immunohistochemical analysis of paraffin-embedded human spleen using 22071-1-AP (CCR10 antibody) at dilution of 1:50 (under 40x lens).