

For Research Use Only

# MAGED1 Polyclonal antibody

Catalog Number: 22053-1-AP

Featured Product

4 Publications



## Basic Information

**Catalog Number:**

22053-1-AP

**Size:**

500 µg/ml

**Source:**

Rabbit

**Isotype:**

IgG

**Immunogen Catalog Number:**

AG17047

**GenBank Accession Number:**

BC014070

**GeneID (NCBI):**

9500

**UNIPROT ID:**

Q9Y5V3

**Full Name:**

melanoma antigen family D, 1

**Calculated MW:**

834 aa, 92 kDa

**Observed MW:**

95-100 kDa

**Purification Method:**

Antigen affinity purification

**Recommended Dilutions:**

WB 1:2000-1:12000

IP 0.5-4.0 µg for 1.0-3.0 mg of total protein lysate

IHC 1:200-1:800

IF 1:20-1:200

## Applications

**Tested Applications:**

FC, IF/ICC, IHC, IP, WB, ELISA

**Cited Applications:**

WB, IF, IHC

**Species Specificity:**

human, mouse, rat

**Cited Species:**

human, mouse

**Note-IHC: suggested antigen retrieval with TE buffer pH 9.0; (\*) Alternatively, antigen retrieval may be performed with citrate buffer pH 6.0**

**Positive Controls:**

WB : A549 cells, HEK-293 cells, mouse placenta tissue

IP : A549 cells,

IHC : mouse placenta tissue, human skin tissue, human placenta tissue

IF : A549 cells,

## Background Information

MAGED1 (also known as NRAGE or Dlxin-1) is a member of the type II melanoma antigen (MAGE) family of protein. MAGED1 can interact with the nerve growth factor receptor p75NTR, antagonize the association of p75NTR with TrkA, inhibit cell cycle progression, and facilitate p75NTR-mediated apoptosis (PMID: 10985348). It has been reported that MAGED1 binds Dlx5 and regulates its transcriptional function. In vivo, MAGED1 binds not only Dlx5 but also Dlx7 and Msx2 and forms homomultimers (PMID: 11084035). MAGED1 knockout mice show depressive behavior and impairments of circadian rhythm (PMID: 20300063; 23314527). Three transcript variants encoding two different isoforms (86kDa and 92 kDa) have been found for the gene of MAGED1.

## Notable Publications

Author	Pubmed ID	Journal	Application
Xiaodi Jiang	29778424	Gene	WB,IHC
Huandi Zhou	26738870	Tumour Biol	WB,IHC,IF
Qiang Lu	31891772	Biochim Biophys Acta Mol Cell Biol Lipids	WB

## Storage

**Storage:**

Store at -20°C. Stable for one year after shipment.

**Storage Buffer:**

PBS with 0.02% sodium azide and 50% glycerol pH 7.3.

Aliquoting is unnecessary for -20°C storage

For technical support and original validation data for this product please contact:

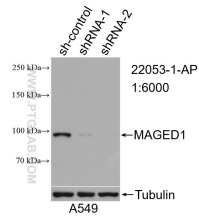
T: 4006900926

E: Proteintech-CN@ptglab.com

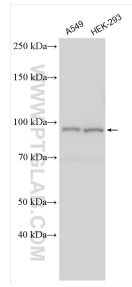
W: ptgcn.com

**This product is exclusively available under Proteintech Group brand and is not available to purchase from any other manufacturer.**

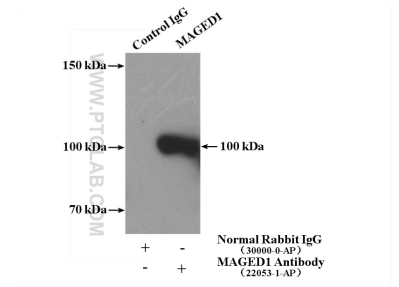
## Selected Validation Data



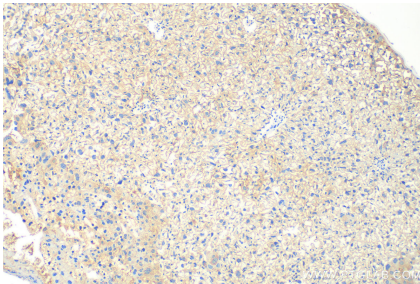
WB result of MAGED1 antibody (22053-1-AP; 1:6000; incubated at room temperature for 1.5 hours) with sh-Control and sh-MAGED1 transfected A549 cells.



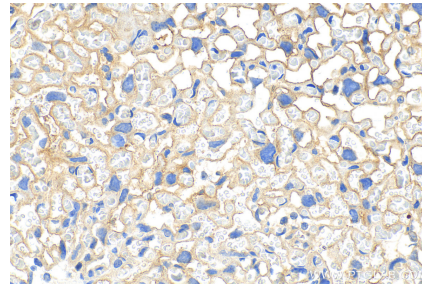
Various lysates were subjected to SDS PAGE followed by western blot with 22053-1-AP (MAGED1 antibody) at dilution of 1:6000 incubated at room temperature for 1.5 hours.



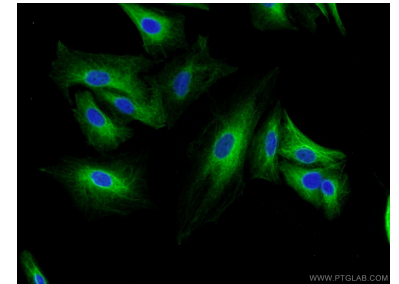
IP result of anti-MAGED1 (IP: 22053-1-AP, 4ug; Detection: 22053-1-AP 1:1000) with A549 cell lysate 400ug.



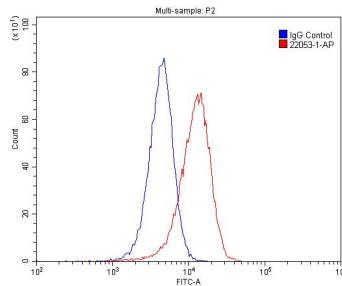
Immunohistochemical analysis of paraffin-embedded mouse placenta tissue slide using 22053-1-AP (MAGED1 antibody) at dilution of 1:400 (under 10x lens). Heat mediated antigen retrieval with Tris-EDTA buffer (pH 9.0).



Immunohistochemical analysis of paraffin-embedded mouse placenta tissue slide using 22053-1-AP (MAGED1 antibody) at dilution of 1:400 (under 40x lens). Heat mediated antigen retrieval with Tris-EDTA buffer (pH 9.0).



Immunofluorescent analysis of A549 cells using 22053-1-AP (MAGED1 antibody) at dilution of 1:50 and Alexa Fluor 488-conjugated AffiniPure Goat Anti-Rabbit IgG(H+L).



1X10<sup>6</sup> HeLa cells were stained with .2ug MAGED1 antibody (22053-1-AP, red) and control antibody (blue). Cells were fixed with 4% PFA and permeabilized with 0.1% Triton X-100. Alexa Fluor 488-conjugated AffiniPure Goat Anti-Rabbit IgG(H+L) with dilution 1:1500.