

For Research Use Only

# CCDC120 Polyclonal antibody

Catalog Number: 22041-1-AP

Featured Product

2 Publications



## Basic Information

**Catalog Number:**

22041-1-AP

**Size:**

650 µg/ml

**Source:**

Rabbit

**Isotype:**

IgG

**Immunogen Catalog Number:**

AG14319

**GenBank Accession Number:**

BC008769

**GeneID (NCBI):**

90060

**UNIPROT ID:**

Q96HB5

**Full Name:**

coiled-coil domain containing 120

**Calculated MW:**

630 aa, 68 kDa

**Observed MW:**

67-70 kDa

**Purification Method:**

Antigen affinity purification

**Recommended Dilutions:**

WB 1:500-1:1000

IHC 1:20-1:200

## Applications

**Tested Applications:**

IHC, WB, ELISA

**Cited Applications:**

WB, IP, IF

**Species Specificity:**

human, mouse, rat

**Cited Species:**

human, mouse

**Note-IHC:** suggested antigen retrieval with **TE buffer pH 9.0; (\*) Alternatively, antigen retrieval may be performed with citrate buffer pH 6.0**

**Positive Controls:**

WB : Jurkat cells, mouse liver tissue

IHC : human colon tissue, human placenta tissue

## Background Information

CCDC120, also named as JM11, is required for neurite growth. In differentiating neuroblastoma cells, CCDC120 colocalizes with CYTH2 in both neurite shaft and growth cone areas. CCDC120 has some isoforms with MW 67-70 kDa.

## Notable Publications

Author	Pubmed ID	Journal	Application
Tomohiro Torii	25326380	J Biol Chem	WB, IF
Ning Huang	28422092	Nat Commun	IP

## Storage

**Storage:**

Store at -20°C. Stable for one year after shipment.

**Storage Buffer:**

PBS with 0.02% sodium azide and 50% glycerol pH 7.3.

Aliquoting is unnecessary for -20°C storage

For technical support and original validation data for this product please contact:

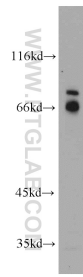
T: 4006900926

E: Proteintech-CN@ptglab.com

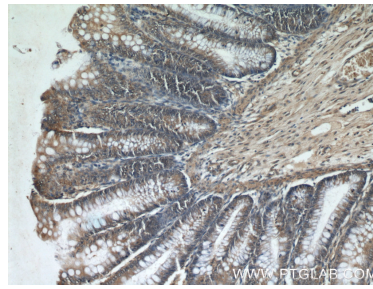
W: ptgcn.com

**This product is exclusively available under Proteintech Group brand and is not available to purchase from any other manufacturer.**

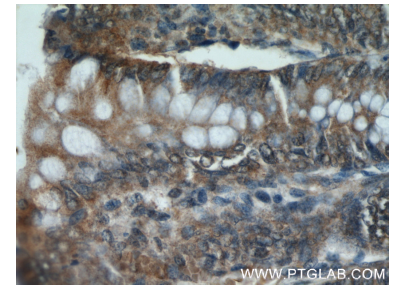
## Selected Validation Data



Jurkat cells were subjected to SDS PAGE followed by western blot with 22041-1-AP (CCDC120 antibody) at dilution of 1:500 incubated at room temperature for 1.5 hours.



Immunohistochemical analysis of paraffin-embedded human colon using 22041-1-AP (CCDC120 antibody) at dilution of 1:50 (under 10x lens).



Immunohistochemical analysis of paraffin-embedded human colon using 22041-1-AP (CCDC120 antibody) at dilution of 1:50 (under 40x lens).