

For Research Use Only

# Bim Polyclonal antibody

Catalog Number: 22037-1-AP

26 Publications



## Basic Information

Catalog Number:

22037-1-AP

Size:

300 µg/ml

Source:

Rabbit

Isotype:

IgG

Immunogen Catalog Number:

AG11875

GenBank Accession Number:

BC033694

GeneID (NCBI):

10018

UNIPROT ID:

O43521

Full Name:

BCL2-like 11 (apoptosis facilitator)

Calculated MW:

198 aa, 22 kDa

Observed MW:

23 and 18 kDa

Purification Method:

Antigen affinity purification

Recommended Dilutions:

WB 1:500-1:1000

IHC 1:50-1:500

## Applications

Tested Applications:

WB, IHC, ELISA

Cited Applications:

WB, IHC

Species Specificity:

human, mouse

Cited Species:

human, mouse

**Note-IHC: suggested antigen retrieval with TE buffer pH 9.0; (\*) Alternatively, antigen retrieval may be performed with citrate buffer pH 6.0**

Positive Controls:

WB : RAW 264.7 cells, Raji cells

IHC : human breast cancer tissue, human prostate cancer tissue

## Background Information

### Notable Publications

Author	Pubmed ID	Journal	Application
Yingjie Qing	34603598	Oxid Med Cell Longev	WB
Xiulian Miao	34689159	Cell Death Discov	WB
Yingjie Lu	33200796	Mol. Med Rep	IHC, WB

## Storage

Storage:

Store at -20°C. Stable for one year after shipment.

Storage Buffer:

PBS with 0.02% sodium azide and 50% glycerol pH 7.3.

Aliquoting is unnecessary for -20°C storage

For technical support and original validation data for this product please contact:

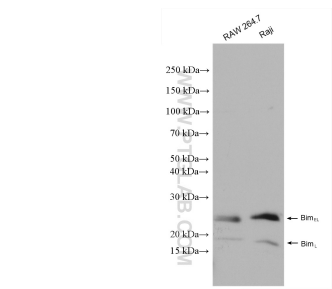
T: 4006900926

E: Proteintech-CN@ptglab.com

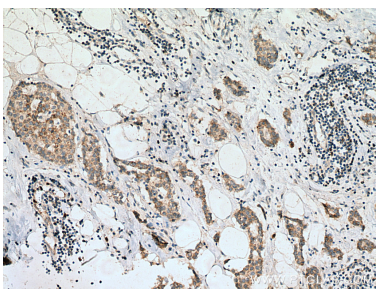
W: ptgcn.com

This product is exclusively available under Proteintech Group brand and is not available to purchase from any other manufacturer.

## Selected Validation Data



Various lysates were subjected to SDS PAGE followed by western blot with 22037-1-AP (BIM, BCL2L11 antibody) at dilution of 1:500 incubated at room temperature for 1.5 hours.



Immunohistochemical analysis of paraffin-embedded human breast cancer tissue slide using 22037-1-AP (BIM, BCL2L11 antibody) at dilution of 1:200 (under 10x lens). Heat mediated antigen retrieval with Tris-EDTA buffer (pH 9.0).