

For Research Use Only

# SARA Polyclonal antibody

Catalog Number: 22033-1-AP

Featured Product

3 Publications



## Basic Information

**Catalog Number:**

22033-1-AP

**Size:**

450 µg/ml

**Source:**

Rabbit

**Isotype:**

IgG

**Immunogen Catalog Number:**

AG16929

**GenBank Accession Number:**

BC032680

**GeneID (NCBI):**

9372

**UNIPROT ID:**

O95405

**Full Name:**

zinc finger, FYVE domain containing 9

**Calculated MW:**

1425 aa, 156 kDa

**Observed MW:**

156 kDa

**Purification Method:**

Antigen affinity purification

**Recommended Dilutions:**

WB 1:500-1:2000

IP 0.5-4.0 µg for 1.0-3.0 mg of total protein lysate

IHC 1:20-1:200

IF 1:50-1:500

## Applications

**Tested Applications:**

IF-P, IHC, IP, WB, ELISA

**Cited Applications:**

WB, IF

**Species Specificity:**

human, mouse, rat

**Cited Species:**

human, mouse

**Note-IHC: suggested antigen retrieval with TE buffer pH 9.0; (\*) Alternatively, antigen retrieval may be performed with citrate buffer pH 6.0**

**Positive Controls:**

**WB:** HEK-293 cells, mouse brain tissue, MCF-7 cells, human brain tissue, HeLa cells

**IP:** mouse brain tissue,

**IHC:** human kidney tissue,

**IF:** mouse brain tissue, mouse kidney tissue

## Background Information

ZFYVE9, also known as SARA (Smad anchor for receptor activation), is a double zinc finger (FYVE domain) protein that interacts directly with SMAD2 and SMAD3, and is involved in Alzheimer's disease. SARA functions to recruit SMAD2/SMAD3 to intracellular membranes and to the TGF-beta receptor. SARA plays a significant role in TGF-mediated signaling by regulating the subcellular location of SMAD2 and SMAD3 and modulating the transcriptional activity of the SMAD3/SMAD4 complex. SARA is possibly associated with TGF-beta receptor internalization.

## Notable Publications

Author	Pubmed ID	Journal	Application
Changgui Shi	36321807	J Bone Miner Res	WB,IF
Deepankar Gahloth	28602823	Structure	WB
Zheng-Zhou Lu	37224259	Sci Adv	WB,IF

## Storage

**Storage:**

Store at -20°C. Stable for one year after shipment.

**Storage Buffer:**

PBS with 0.02% sodium azide and 50% glycerol pH 7.3.

Aliquoting is unnecessary for -20°C storage

For technical support and original validation data for this product please contact:

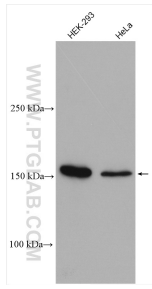
T: 4006900926

E: Proteintech-CN@ptglab.com

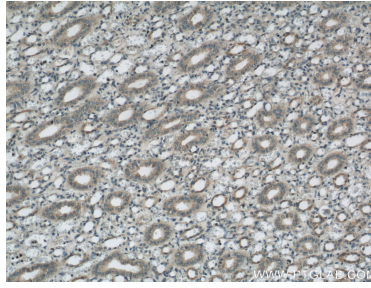
W: ptgcn.com

This product is exclusively available under Proteintech Group brand and is not available to purchase from any other manufacturer.

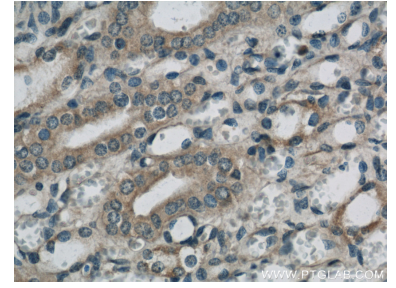
## Selected Validation Data



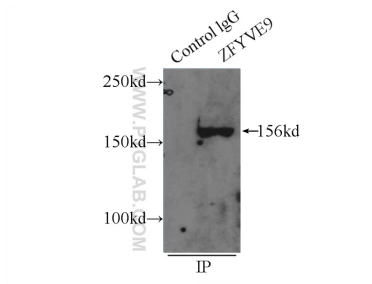
Various lysates were subjected to SDS PAGE followed by western blot with 22033-1-AP (SARA antibody) at dilution of 1:1000 incubated at room temperature for 1.5 hours.



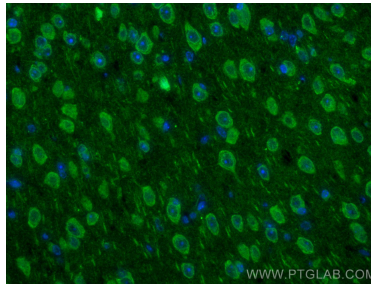
Immunohistochemical analysis of paraffin-embedded human kidney using 22033-1-AP (SARA antibody) at dilution of 1:50 (under 10x lens).



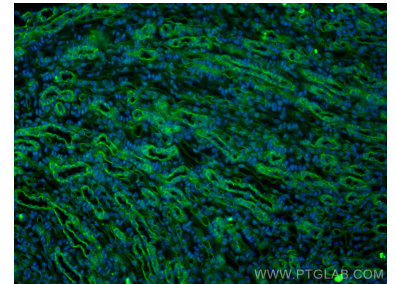
Immunohistochemical analysis of paraffin-embedded human kidney using 22033-1-AP (SARA antibody) at dilution of 1:50 (under 40x lens).



IP result of anti-SARA (IP:22033-1-AP, 5ug; Detection:22033-1-AP 1:1000) with mouse brain tissue lysate 5000ug.



Immunofluorescent analysis of (4% PFA) fixed mouse brain tissue using SARA antibody (22033-1-AP) at dilution of 1:200 and CoraLite®488-Conjugated AffiniPure Goat Anti-Rabbit IgG(H+L).



Immunofluorescent analysis of (4% PFA) fixed mouse kidney tissue using SARA antibody (22033-1-AP) at dilution of 1:200 and CoraLite®488-Conjugated AffiniPure Goat Anti-Rabbit IgG(H+L).