

For Research Use Only

# SLC26A5 Polyclonal antibody, PBS Only

Catalog Number:22013-1-PBS



## Basic Information

<b>Catalog Number:</b> 22013-1-PBS	<b>GenBank Accession Number:</b> BC100832	<b>Purification Method:</b> Antigen affinity purification
<b>Size:</b> 1 mg/ml	<b>GeneID (NCBI):</b> 375611	
<b>Source:</b> Rabbit	<b>UNIPROT ID:</b> P58743	
<b>Isotype:</b> IgG	<b>Full Name:</b> solute carrier family 26, member 5 (prestin)	
<b>Immunogen Catalog Number:</b> AG16631	<b>Calculated MW:</b> 744 aa, 81 kDa	
	<b>Observed MW:</b> 70 kDa	

## Applications

**Tested Applications:**  
WB, Indirect ELISA

**Species Specificity:**  
human, mouse, rat

## Background Information

SLC26A5 (Prestin) is a protein that is housed in abundance within the lateral membrane of outer hair cells (OHC) in the organ of Corti. The protein imparts robust electromechanical activity to the cell that is unlike any other form of cellular motility, notably associated with a voltage-dependent, bell-shaped nonlinear capacitance (NLC) that reports on conformational changes in the protein (PMID: 32061780). SLC26A5 is responsible for acute sensitivity and frequency selectivity in the vertebrate auditory system (PMID: 34294052).

## Storage

**Storage:**  
Store at -80°C.  
**The product is shipped with ice packs. Upon receipt, store it immediately at -80°C**

**Storage Buffer:**  
PBS Only

For technical support and original validation data for this product please contact:

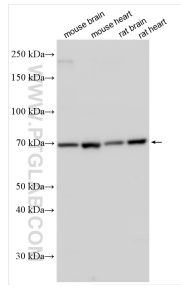
T: 4006900926

E: [Proteintech-CN@ptglab.com](mailto:Proteintech-CN@ptglab.com)

W: [ptgcn.com](http://ptgcn.com)

**This product is exclusively available under Proteintech Group brand and is not available to purchase from any other manufacturer.**

## Selected Validation Data



Various lysates were subjected to SDS PAGE followed by western blot with 22013-1-AP (SLC26A5 antibody) at dilution of 1:1000 incubated at room temperature for 1.5 hours. This data was developed using the same antibody clone with 22013-1-PBS in a different storage buffer formulation.