

# PHF20 Polyclonal antibody

Catalog Number: 22010-1-AP

1 Publications

## Basic Information

### Catalog Number:

22010-1-AP

### Size:

800 µg/ml

### Source:

Rabbit

### Isotype:

IgG

### Immunogen Catalog Number:

AG15686

### GenBank Accession Number:

BC150178

### GeneID (NCBI):

51230

### UNIPROT ID:

Q9BVI0

### Full Name:

PHD finger protein 20

### Calculated MW:

1012 aa, 115 kDa

### Observed MW:

130 kDa

### Purification Method:

Antigen affinity purification

### Recommended Dilutions:

WB 1:500-1:2000

IF/ICC 1:50-1:500

## Applications

### Tested Applications:

IF/ICC, WB, ELISA

### Cited Applications:

WB

### Species Specificity:

human, mouse

### Cited Species:

human

### Positive Controls:

WB : HeLa cells, Jurkat cells, mouse testis tissue

IF/ICC : HeLa cells,

## Background Information

PHD finger protein 20 (PHF20), also known as NZF, TZIP, GLEA2 or HCA58, is a 1,012 amino acid protein that localizes to the nucleus and contains one PHD-type zinc finger, one C2H2-type zinc finger and one A/T hook DNA-binding domain. PHF20 contains a tudor domain, which facilitates binding to di-methylated histone H4 Lys20. PHF20 is expressed in a variety of tissues, including liver, heart, lung, pancreas, spleen, testis and placenta. PHF20 is thought to function as a transcription factor, possibly playing a role in the development of cancers, including glioblastoma, lung cancer, colon cancer and ovarian cancer. PHF20 exists as three alternatively spliced isoforms (150kd, 130kd and 120kd) which are encoded by a gene that maps to human chromosome 20 (22072714).

## Notable Publications

Author	Pubmed ID	Journal	Application
Quan Jin	35039981	Biochem Genet	WB

## Storage

### Storage:

Store at -20°C. Stable for one year after shipment.

### Storage Buffer:

PBS with 0.02% sodium azide and 50% glycerol pH 7.3.

Aliquoting is unnecessary for -20°C storage

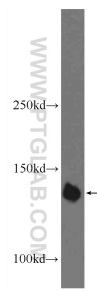
For technical support and original validation data for this product please contact:

T: 4006900926

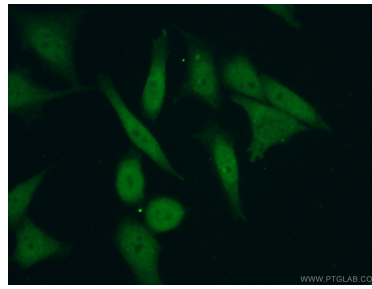
E: [Proteintech-CN@ptglab.com](mailto:Proteintech-CN@ptglab.com)W: [ptgcn.com](http://ptgcn.com)

This product is exclusively available under Proteintech Group brand and is not available to purchase from any other manufacturer.

## Selected Validation Data



HeLa cells were subjected to SDS PAGE followed by western blot with 22010-1-AP (PHF20 Antibody) at dilution of 1:1000 incubated at room temperature for 1.5 hours.



Immunofluorescent analysis of (10% Formaldehyde) fixed HeLa cells using 22010-1-AP (PHF20 antibody) at dilution of 1:50 and Alexa Fluor 488-conjugated AffiniPure Goat Anti-Rabbit IgG(H+L).