

For Research Use Only

# ROM1 Polyclonal antibody

Catalog Number: 21984-1-AP **9 Publications**



## Basic Information

<b>Catalog Number:</b> 21984-1-AP	<b>GenBank Accession Number:</b> BC008100	<b>Purification Method:</b> Antigen affinity purification
<b>Size:</b> 300 µg/ml	<b>GeneID (NCBI):</b> 6094	<b>Recommended Dilutions:</b> WB 1:500-1:3000 IF 1:20-1:200
<b>Source:</b> Rabbit	<b>UNIPROT ID:</b> Q03395	
<b>Isotype:</b> IgG	<b>Full Name:</b> retinal outer segment membrane protein 1	
<b>Immunogen Catalog Number:</b> AG17049	<b>Calculated MW:</b> 351 aa, 37 kDa	
	<b>Observed MW:</b> 37-45 kDa	

## Applications

<b>Tested Applications:</b> IF/ICC, WB, ELISA	<b>Positive Controls:</b> WB : mouse eye tissue, HeLa cells, rat eye tissue IF : HeLa cells,
<b>Cited Applications:</b> WB, IF, IHC	
<b>Species Specificity:</b> human, mouse, rat	
<b>Cited Species:</b> human, mouse	

## Background Information

ROM1 (also known as TSPAN23) is a transmembrane protein present in photoreceptor outer segment disc membranes. ROM1 belongs to the tetraspanin superfamily, which are characterized by the presence of four conserved transmembrane regions. Tetraspanins have been involved in diverse processes such as cell activation and proliferation, adhesion and motility, differentiation, and cancer. ROM1 is required for rod photoreceptor viability and the regulation of disk morphogenesis (PMID: 10802659). It may function as an adhesion molecule involved in stabilization and compaction of outer segment disks.

## Notable Publications

Author	Pubmed ID	Journal	Application
Poppy Datta	31694913	J Biol Chem	WB, IF
Poppy Datta	33961633	PLoS One	WB, IHC
Poppy Datta	26216965	Proc Natl Acad Sci U S A	WB, IF

## Storage

**Storage:**  
Store at -20°C. Stable for one year after shipment.  
**Storage Buffer:**  
PBS with 0.02% sodium azide and 50% glycerol pH 7.3.  
Aliquoting is unnecessary for -20°C storage

For technical support and original validation data for this product please contact:

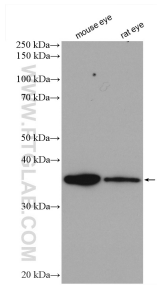
T: 4006900926

E: [Proteintech-CN@ptglab.com](mailto:Proteintech-CN@ptglab.com)

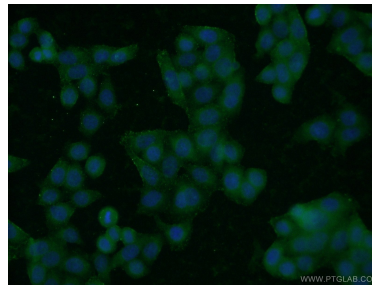
W: [ptgcn.com](http://ptgcn.com)

**This product is exclusively available under Proteintech Group brand and is not available to purchase from any other manufacturer.**

## Selected Validation Data



Various lysates were subjected to SDS PAGE followed by western blot with 21984-1-AP (ROM1 antibody) at dilution of 1:1500 incubated at room temperature for 1.5 hours.



Immunofluorescent analysis of HeLa cells using 21984-1-AP (ROM1 antibody) at dilution of 1:50 and Alexa Fluor 488-conjugated AffiniPure Goat Anti-Rabbit IgG(H+L).