

For Research Use Only

# GFRA2 Polyclonal antibody

Catalog Number: 21973-1-AP

3 Publications



## Basic Information

### Catalog Number:

21973-1-AP

### Size:

650 µg/ml

### Source:

Rabbit

### Isotype:

IgG

### Immunogen Catalog Number:

AG16893

### GenBank Accession Number:

BC041688

### GeneID (NCBI):

2675

### UNIPROT ID:

O00451

### Full Name:

GDNF family receptor alpha 2

### Calculated MW:

464 aa, 52 kDa

### Observed MW:

34-40 kDa, 50-55 kDa

### Purification Method:

Antigen affinity purification

### Recommended Dilutions:

WB 1:500-1:2000

IHC 1:20-1:200

## Applications

### Tested Applications:

WB, IHC, ELISA

### Cited Applications:

WB, IHC

### Species Specificity:

human, mouse

### Cited Species:

human, rat

### Positive Controls:

WB : HepG2 cells, multi-cells/tissue

IHC : human liver tissue,

**Note-IHC: suggested antigen retrieval with TE buffer pH 9.0; (\*) Alternatively, antigen retrieval may be performed with citrate buffer pH 6.0**

## Background Information

GFRA2, also named as GDNFRB, RETL2 and TRNR2, belongs to the GDNFR family. It is a receptor for neurturin. GFRA2 mediates the NRTN-induced autophosphorylation and activation of the RET receptor. It is a potent survival factor for central dopaminergic neurons, motor neurons, and several other populations of neurons in the central and peripheral nervous systems. The GDNF signal is mediated by a complex of the receptor tyrosine kinase RET and a glycosylphosphatidylinositol (GPI)-linked protein, GDNFRA. GFRA2 has three isoforms with MW 34-36 kDa, 39-41 kDa and 50-55 kDa. This antibody recognizes all the three isoforms.

## Notable Publications

Author	Pubmed ID	Journal	Application
Guo-Qing Wang	31210367	Biotechnol Appl Biochem	WB
Jiangning Gu	27400681	Cancer Lett	IHC
Luoying Wang	39505982	Sci Rep	IHC

## Storage

### Storage:

Store at -20°C. Stable for one year after shipment.

### Storage Buffer:

PBS with 0.02% sodium azide and 50% glycerol pH 7.3.

Aliquoting is unnecessary for -20°C storage

For technical support and original validation data for this product please contact:

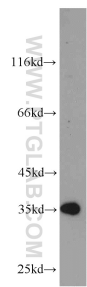
T: 4006900926

E: [Proteintech-CN@ptglab.com](mailto:Proteintech-CN@ptglab.com)

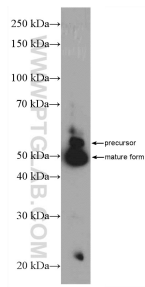
W: [ptgcn.com](http://ptgcn.com)

**This product is exclusively available under Proteintech Group brand and is not available to purchase from any other manufacturer.**

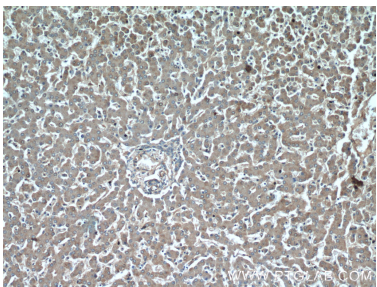
Selected Validation Data



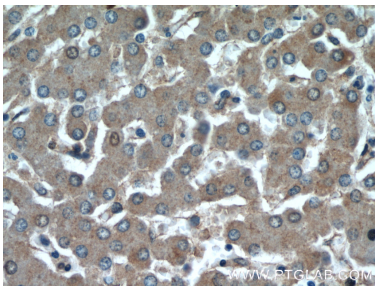
HepG2 cells were subjected to SDS PAGE followed by western blot with 21973-1-AP (GFRA2 antibody) at dilution of 1:1000 incubated at room temperature for 1.5 hours.



mouse brain tissue were subjected to SDS PAGE followed by western blot with 21973-1-AP (GFRA2 Antibody) at dilution of 1:600 incubated at room temperature for 1.5 hours.



Immunohistochemical analysis of paraffin-embedded human liver using 21973-1-AP (GFRA2 antibody) at dilution of 1:50 (under 10x lens).



Immunohistochemical analysis of paraffin-embedded human liver using 21973-1-AP (GFRA2 antibody) at dilution of 1:50 (under 40x lens).