

For Research Use Only

# ALCAM Polyclonal antibody

Catalog Number: 21972-1-AP

8 Publications



## Basic Information

Catalog Number:

21972-1-AP

Size:

260 ug/ml

Source:

Rabbit

Isotype:

IgG

Immunogen Catalog Number:

AG16892

GenBank Accession Number:

BC137097

GeneID (NCBI):

214

UNIPROT ID:

Q13740

Full Name:

activated leukocyte cell adhesion molecule

Calculated MW:

583 aa, 65 kDa

Observed MW:

100-110 kDa

Purification Method:

Antigen affinity purification

Recommended Dilutions:

WB 1:2000-1:12000

IHC 1:50-1:500

## Applications

Tested Applications:

WB, IHC, ELISA

Cited Applications:

WB, IHC, IF

Species Specificity:

human, mouse

Cited Species:

human, mouse

**Note-IHC: suggested antigen retrieval with TE buffer pH 9.0; (\*) Alternatively, antigen retrieval may be performed with citrate buffer pH 6.0**

Positive Controls:

**WB** : A549 cells, human liver tissue, mouse brain tissue, U2OS cells

**IHC** : mouse liver tissue, human breast cancer tissue, human colon cancer tissue, mouse brain tissue

## Background Information

Activated leukocyte cell adhesion molecule (ALCAM, also known as CD166) is a cell adhesion molecule that belongs to the immunoglobulin superfamily. It is involved in cell-cell adhesion through homophilic and heterophilic (to CD6) interactions. ALCAM is widely expressed in a variety of normal tissues. Altered ALCAM expression has been associated with the differentiation state and progression in some neoplasms including melanoma, prostate, colorectal, and breast cancers (PMID: 20461761; 18172759).

## Notable Publications

Author	Pubmed ID	Journal	Application
Dong-Ming Wu	32440144	Onco Targets Ther	WB,IF
Xiang Hu	32512510	EBioMedicine	IHC
Dong-Ming Wu	31024010	Cell Death Dis	WB,IHC

## Storage

Storage:

Store at -20°C. Stable for one year after shipment.

Storage Buffer:

PBS with 0.02% sodium azide and 50% glycerol pH 7.3.

Aliquoting is unnecessary for -20°C storage

For technical support and original validation data for this product please contact:

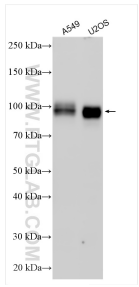
T: 4006900926

E: Proteintech-CN@ptglab.com

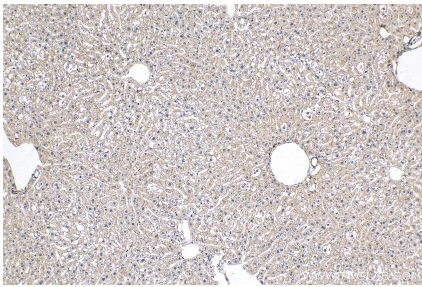
W: ptgcn.com

**This product is exclusively available under Proteintech Group brand and is not available to purchase from any other manufacturer.**

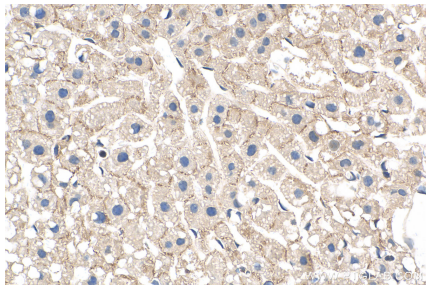
Selected Validation Data



Various lysates were subjected to SDS PAGE followed by western blot with 21972-1-AP (ALCAM antibody) at dilution of 1:6000 incubated at room temperature for 1.5 hours.



Immunohistochemical analysis of paraffin-embedded mouse liver tissue slide using 21972-1-AP (ALCAM antibody) at dilution of 1:200 (under 10x lens). Heat mediated antigen retrieval with Tris-EDTA buffer (pH 9.0).



Immunohistochemical analysis of paraffin-embedded mouse liver tissue slide using 21972-1-AP (ALCAM antibody) at dilution of 1:200 (under 40x lens). Heat mediated antigen retrieval with Tris-EDTA buffer (pH 9.0).