

For Research Use Only

MACC1 Polyclonal antibody

Catalog Number: 21970-1-AP **1 Publications**



Basic Information

Catalog Number: 21970-1-AP	GenBank Accession Number: BC137090	Purification Method: Antigen affinity purification
Size: 400 µg/ml	GeneID (NCBI): 346389	Recommended Dilutions: IHC 1:20-1:200
Source: Rabbit	UNIPROT ID: Q6ZLN28	
Isotype: IgG	Full Name: metastasis associated in colon cancer	
Immunogen Catalog Number: AG16884	Calculated MW: 852 aa, 97 kDa	

Applications

Tested Applications: IHC, ELISA	Positive Controls: IHC : human liver cancer tissue, human colon cancer tissue
Species Specificity: human, mouse	
Note-IHC: suggested antigen retrieval with TE buffer pH 9.0; (*) Alternatively, antigen retrieval may be performed with citrate buffer pH 6.0	

Background Information

MACC1, Metalloantigenolytic Cleavage Cartilage Proteinase 1, belongs to the ADAM (a disintegrin and metalloprotease) family. MACC1 was first identified in colon cancer. It is a key prognostic biomarker and is involved in recurrence, metastasis, and survival in solid cancers (PMID: 23815185). MACC1 expression is primarily observed in cartilage, but it's also present in other tissues like bone, synovium, and the developing nervous system (PMID: 36979146).

Notable Publications

Author	Pubmed ID	Journal	Application
Shuo Chen	27991682	Mol Carcinog	

Storage

Storage:
Store at -20°C. Stable for one year after shipment.
Storage Buffer:
PBS with 0.02% sodium azide and 50% glycerol pH 7.3.
Aliquoting is unnecessary for -20°C storage

For technical support and original validation data for this product please contact:

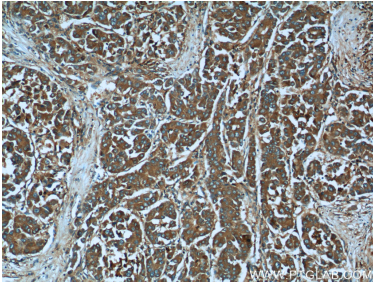
T: 4006900926

E: Proteintech-CN@ptglab.com

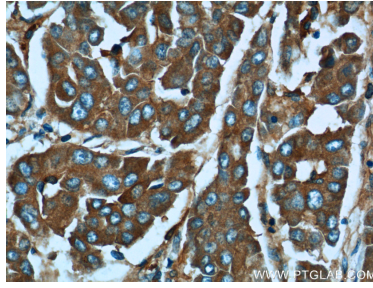
W: ptgcn.com

This product is exclusively available under Proteintech Group brand and is not available to purchase from any other manufacturer.

Selected Validation Data



Immunohistochemical analysis of paraffin-embedded human liver cancer tissue slide using 21970-1-AP (MACC1 Antibody) at dilution of 1:50 (under 10x lens).



Immunohistochemical analysis of paraffin-embedded human liver cancer tissue slide using 21970-1-AP (MACC1 Antibody) at dilution of 1:50 (under 40x lens).