

# SLC14A2 Polyclonal antibody

Catalog Number: 21932-1-AP

## Basic Information

**Catalog Number:**

21932-1-AP

**Size:**

350 µg/ml

**Source:**

Rabbit

**Isotype:**

IgG

**Immunogen Catalog Number:**

AG16561

**GenBank Accession Number:**

BC110445

**GeneID (NCBI):**

8170

**UNIPROT ID:**

Q15849

**Full Name:**

solute carrier family 14 (urea transporter), member 2

**Calculated MW:**

920 aa, 101 kDa

**Observed MW:**

43 kDa, 101 kDa

**Purification Method:**

Antigen affinity purification

**Recommended Dilutions:**

WB 1:1000-1:4000

## Applications

**Tested Applications:**

WB, ELISA

**Species Specificity:**

human, mouse

**Positive Controls:**

WB : mouse brain tissue, human brain tissue

## Background Information

SLC14A2, also known as human urea transporter -2 (HUT2), is the human homolog of UT-A2 and the only kidney-specific urea transporter cloned in humans. Urea transport in the kidney is mediated by a family of transporter proteins, including renal urea transporters (UT-A) and erythrocyte urea transporters (UT-B). UT-A proteins expressed in the kidney play a critical role in generating the hypertonic medulla, which is an integral component of the urinary concentrating mechanism (PMID: 11590132, 11880324). The 4.2-kb HUT-A1 cDNA encodes a 920-amino acid peptide, which is 89% identical to the rat UT-A1 protein (PMID: 11502588).

## Storage

**Storage:**

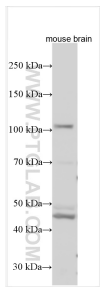
Store at -20°C. Stable for one year after shipment.

**Storage Buffer:**

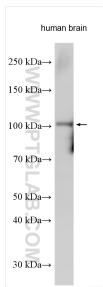
PBS with 0.02% sodium azide and 50% glycerol pH 7.3.

Aliquoting is unnecessary for -20°C storage

# Selected Validation Data



Various lysates were subjected to SDS PAGE followed by western blot with 21932-1-AP (SLC14A2 antibody) at dilution of 1:2000 incubated at room temperature for 1.5 hours.



Various lysates were subjected to SDS PAGE followed by western blot with 21932-1-AP (SLC14A2 antibody) at dilution of 1:1500 incubated at room temperature for 1.5 hours.