

# TMEM139 Polyclonal antibody

Catalog Number: 21912-1-AP

## Basic Information

**Catalog Number:**

21912-1-AP

**Size:**

800 µg/ml

**Source:**

Rabbit

**Isotype:**

IgG

**Immunogen Catalog Number:**

AG15354

**GenBank Accession Number:**

BC035517

**GeneID (NCBI):**

135932

**UNIPROT ID:**

Q8IV31

**Full Name:**

transmembrane protein 139

**Calculated MW:**

216 aa, 24 kDa

**Observed MW:**

24-30 kDa

**Purification Method:**

Antigen affinity purification

**Recommended Dilutions:**

WB 1:500-1:1000

IHC 1:20-1:200

## Applications

**Tested Applications:**

IHC, WB, ELISA

**Species Specificity:**

human, mouse

**Note-IHC:** suggested antigen retrieval with **TE buffer pH 9.0; (\*)** Alternatively, antigen retrieval may be performed with **citrate buffer pH 6.0**

**Positive Controls:**

WB : mouse lung tissue,

IHC : human lung cancer tissue, human kidney tissue

## Background Information

### Storage

**Storage:**

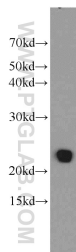
Store at -20°C. Stable for one year after shipment.

**Storage Buffer:**

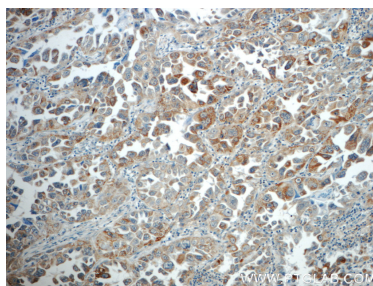
PBS with 0.02% sodium azide and 50% glycerol pH 7.3.

Aliquoting is unnecessary for -20°C storage

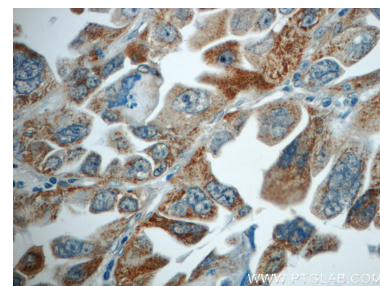
## Selected Validation Data



mouse lung tissue were subjected to SDS PAGE followed by western blot with 21912-1-AP (TMEM139 antibody) at dilution of 1:800 incubated at room temperature for 1.5 hours.



Immunohistochemical analysis of paraffin-embedded human lung cancer slide using 21912-1-AP (TMEM139 Antibody) at dilution of 1:50.



Immunohistochemical analysis of paraffin-embedded human lung cancer slide using 21912-1-AP (TMEM139 Antibody) at dilution of 1:50.