

For Research Use Only

# RBM7 Polyclonal antibody, PBS Only

Catalog Number: 21896-1-PBS



## Basic Information

<b>Catalog Number:</b> 21896-1-PBS	<b>GenBank Accession Number:</b> BC034381	<b>Purification Method:</b> Antigen affinity purification
<b>Concentration:</b> 1 mg/ml	<b>GeneID (NCBI):</b> 10179	
<b>Source:</b> Rabbit	<b>UNIPROT ID:</b> Q9Y580	
<b>Isotype:</b> IgG	<b>Full Name:</b> RNA binding motif protein 7	
<b>Immunogen Catalog Number:</b> AG11106	<b>Calculated MW:</b> 266 aa, 31 kDa	
	<b>Observed MW:</b> 30-35 kDa	

## Applications

**Tested Applications:**  
WB, IHC, IF/ICC, Indirect ELISA

**Species Specificity:**  
human

## Background Information

RBM7 (RNA-binding motif protein 7) is an RNA-binding protein initially described to associate with splicing factors, presumably to target intronic RNA for decay (PMID: 35688134). RBM7 regulates the nuclear degradation of NEAT1 non-coding RNA, resulting in sustained apoptosis in the lung epithelium and fibrosis (PMID: 32708315).

## Storage

**Storage:**  
Store at -80°C.  
**The product is shipped with ice packs. Upon receipt, store it immediately at -80°C**

**Storage Buffer:**  
PBS Only

For technical support and original validation data for this product please contact:

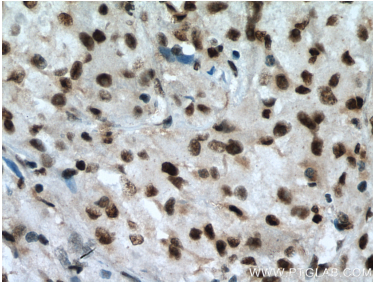
T: 4006900926

E: [Proteintech-CN@ptglab.com](mailto:Proteintech-CN@ptglab.com)

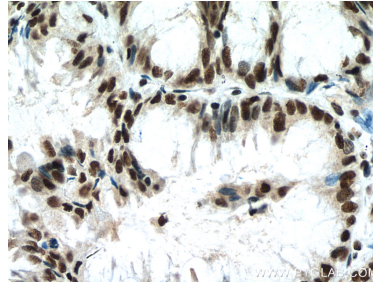
W: [ptgcn.com](http://ptgcn.com)

**This product is exclusively available under Proteintech Group brand and is not available to purchase from any other manufacturer.**

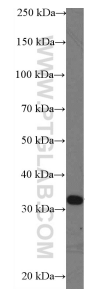
## Selected Validation Data



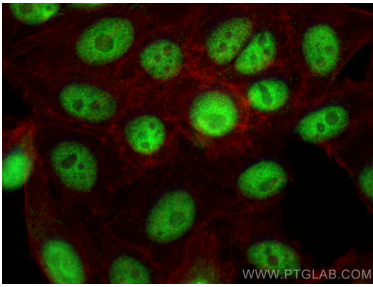
Immunohistochemical analysis of paraffin-embedded human liver cancer tissue slide using 21896-1-AP (RBM7 antibody) at dilution of 1:200 (under 40x lens). Heat mediated antigen retrieval with Tris-EDTA buffer (pH 9.0). This data was developed using the same antibody clone with 21896-1-PBS in a different storage buffer formulation.



Immunohistochemical analysis of paraffin-embedded human lung cancer tissue slide using 21896-1-AP (RBM7 antibody) at dilution of 1:200 (under 40x lens). Heat mediated antigen retrieval with Tris-EDTA buffer (pH 9.0). This data was developed using the same antibody clone with 21896-1-PBS in a different storage buffer formulation.



HepG2 cells were subjected to SDS PAGE followed by western blot with 21896-1-AP (RBM7 Antibody) at dilution of 1:1000 incubated at room temperature for 1.5 hours. This data was developed using the same antibody clone with 21896-1-PBS in a different storage buffer formulation.



Immunofluorescent analysis of (4% PFA) fixed HepG2 cells using RBM7 antibody (21896-1-AP) at dilution of 1:600 and CoralLite® 488-Conjugated Goat Anti-Rabbit IgG(H+L) (SA00013-2), CL594-Phalloidin (red). This data was developed using the same antibody clone with 21896-1-PBS in a different storage buffer formulation.