

## RBM7 Polyclonal antibody

Catalog Number: 21896-1-AP

4 Publications

## Basic Information

## Catalog Number:

21896-1-AP

## Concentration:

800 ug/ml

## Source:

Rabbit

## Isotype:

IgG

## Immunogen Catalog Number:

AG11106

## GenBank Accession Number:

BC034381

## GeneID (NCBI):

10179

## UNIPROT ID:

Q9Y580

## Full Name:

RNA binding motif protein 7

## Calculated MW:

266 aa, 31 kDa

## Observed MW:

30-35 kDa

## Purification Method:

Antigen affinity purification

## Recommended Dilutions:

WB 1:500-1:2000

IHC 1:50-1:500

IF/ICC 1:300-1:1200

## Applications

## Tested Applications:

WB, IHC, IF/ICC, ELISA

## Cited Applications:

WB

## Species Specificity:

human

## Cited Species:

human

**Note-IHC: suggested antigen retrieval with *TE buffer pH 9.0*; (\*) Alternatively, antigen retrieval may be performed with *citrate buffer pH 6.0***

## Positive Controls:

WB : HepG2 cells, HeLa cells

IHC : human liver cancer tissue, human lung cancer tissue

IF/ICC : HepG2 cells,

## Background Information

RBM7 (RNA-binding motif protein 7) is an RNA-binding protein initially described to associate with splicing factors, presumably to target intronic RNA for decay (PMID: 35688134). RBM7 regulates the nuclear degradation of NEAT1 non-coding RNA, resulting in sustained apoptosis in the lung epithelium and fibrosis (PMID: 32708315).

## Notable Publications

Author	Pubmed ID	Journal	Application
Andrii Bugai	30824372	Mol Cell	WB
Qianqian Yang	39988317	Nucleic Acids Res	WB
Jérôme O Rouvière	37329882	Mol Cell	WB

## Storage

## Storage:

Store at -20°C. Stable for one year after shipment.

## Storage Buffer:

PBS with 0.02% sodium azide and 50% glycerol, pH7.3

Aliquoting is unnecessary for -20°C storage

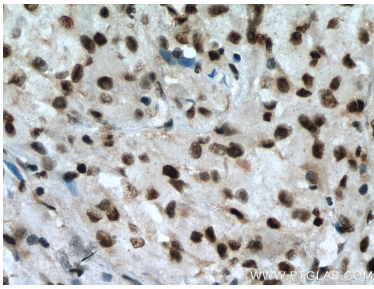
For technical support and original validation data for this product please contact:

T: 4006900926

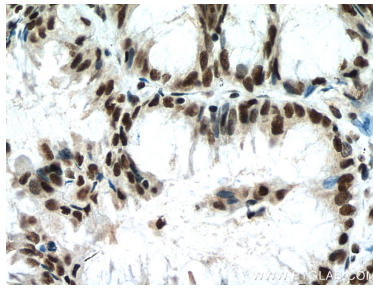
E: [Proteintech-CN@ptglab.com](mailto:Proteintech-CN@ptglab.com)W: [ptgcn.com](http://ptgcn.com)

This product is exclusively available under Proteintech Group brand and is not available to purchase from any other manufacturer.

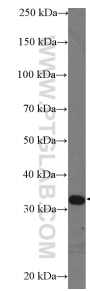
## Selected Validation Data



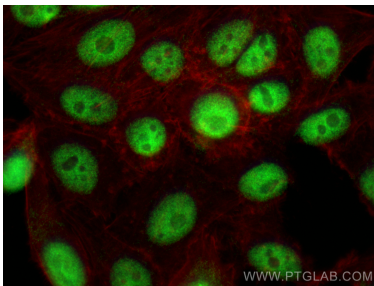
Immunohistochemical analysis of paraffin-embedded human liver cancer tissue slide using 21896-1-AP (RBM7 antibody) at dilution of 1:200 (under 40x lens). Heat mediated antigen retrieval with Tris-EDTA buffer (pH 9.0).



Immunohistochemical analysis of paraffin-embedded human lung cancer tissue slide using 21896-1-AP (RBM7 antibody) at dilution of 1:200 (under 40x lens). Heat mediated antigen retrieval with Tris-EDTA buffer (pH 9.0).



HepG2 cells were subjected to SDS PAGE followed by western blot with 21896-1-AP (RBM7 Antibody) at dilution of 1:1000 incubated at room temperature for 1.5 hours.



Immunofluorescent analysis of (4% PFA) fixed HepG2 cells using RBM7 antibody (21896-1-AP) at dilution of 1:600 and CoraLite® 488-Conjugated Goat Anti-Rabbit IgG(H+L) (SA00013-2), CL594-Phalloidin (red).