

For Research Use Only

DUS4L Polyclonal antibody

Catalog Number: 21870-1-AP



Basic Information

Catalog Number: 21870-1-AP	GenBank Accession Number: BC111774	Purification Method: Antigen affinity purification
Size: 650 µg/ml	GeneID (NCBI): 11062	Recommended Dilutions: WB 1:500-1:2000 IHC 1:50-1:500
Source: Rabbit	UNIPROT ID: O95620	
Isotype: IgG	Full Name: dihydrouridine synthase 4-like (S. cerevisiae)	
Immunogen Catalog Number: AG16145	Calculated MW: 317 aa, 36 kDa	
	Observed MW: 22 kDa, 30 kDa	

Applications

Tested Applications:

IHC, WB, ELISA

Species Specificity:

human, mouse

Note-IHC: suggested antigen retrieval with TE buffer pH 9.0; (*) Alternatively, antigen retrieval may be performed with citrate buffer pH 6.0

Positive Controls:

WB: mouse kidney tissue,

IHC: human liver cancer tissue,

Background Information

tRNA-dihydrouridine synthase 4-like belongs to the dus family. It catalyzes the synthesis of dihydrouridine and a modified base found in the D-loop of most tRNAs. Researches showed that DUS4L was also phosphorylated in vitro by a Ca²⁺ calmodulin-activated kinase. It has 2 isoforms produced by alternative splicing. One, at 35 kDa, comigrated with a second cAMP-stimulated RIS-ROS phosphoprotein, DUS4L, which was also detected in the cytoskeleton. This antibody recognizes the C-terminal of DUS4L.

Storage

Storage:

Store at -20°C. Stable for one year after shipment.

Storage Buffer:

PBS with 0.02% sodium azide and 50% glycerol pH 7.3.

Aliquoting is unnecessary for -20°C storage

For technical support and original validation data for this product please contact:

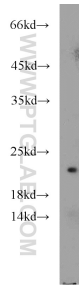
T: 4006900926

E: Proteintech-CN@ptglab.com

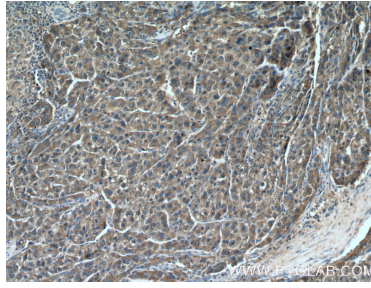
W: ptgcn.com

This product is exclusively available under Proteintech Group brand and is not available to purchase from any other manufacturer.

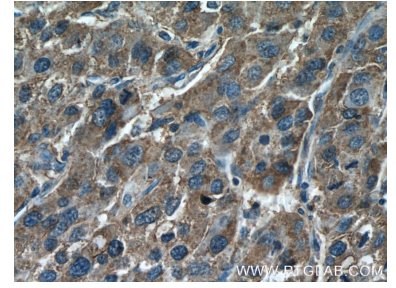
Selected Validation Data



mouse kidney tissue were subjected to SDS PAGE followed by western blot with 21870-1-AP (DUS4L antibody) at dilution of 1:1000 incubated at room temperature for 1.5 hours.



Immunohistochemical analysis of paraffin-embedded human liver cancer tissue slide using 21870-1-AP (DUS4L Antibody) at dilution of 1:200 (under 10x lens).



Immunohistochemical analysis of paraffin-embedded human liver cancer tissue slide using 21870-1-AP (DUS4L Antibody) at dilution of 1:200 (under 40x lens).