

For Research Use Only

Collagen Type XI Polyclonal antibody, PBS Only

Catalog Number: 21841-1-PBS



Basic Information

Catalog Number: 21841-1-PBS	GenBank Accession Number: BC117697	Purification Method: Antigen affinity purification
Size: 1 mg/ml	GeneID (NCBI): 1301	
Source: Rabbit	UNIPROT ID: P12107	
Isotype: IgG	Full Name: collagen, type XI, alpha 1	
Immunogen Catalog Number: AG16509	Calculated MW: 1818 aa, 182 kDa	

Applications

Tested Applications:
IHC, IF-P, Indirect ELISA

Species Specificity:
human

Background Information

COL11A1 is an important component of collagen XI and is considered to play an important role in a variety of connective tissue diseases. Type XI collagen is widely distributed in tissues including cartilage, bone, and muscle, and its hereditary absence in Marshall's syndrome, Stickler's syndrome, fibrochondrogenesis, and nonsyndromic hearing loss deafness, autosomal dominant 37 leads to facial and eye abnormalities, hearing loss, and joint problems. The COL11A1 expression was significantly correlated with the degree of immune infiltration and the expression of a variety of immune cell markers in tumor tissue. (PMID: 36160004 33610546)

Storage

Storage:
Store at -80°C.
The product is shipped with ice packs. Upon receipt, store it immediately at -80°C

Storage Buffer:
PBS Only

For technical support and original validation data for this product please contact:

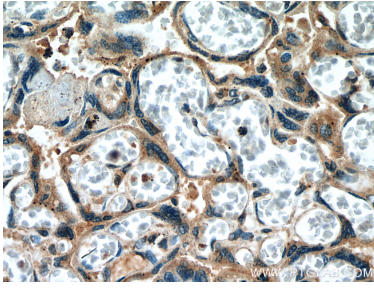
T: 4006900926

E: Proteintech-CN@ptglab.com

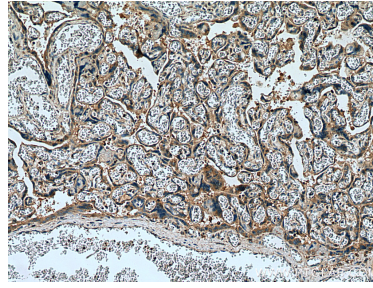
W: ptgcn.com

This product is exclusively available under Proteintech Group brand and is not available to purchase from any other manufacturer.

Selected Validation Data



Immunohistochemical analysis of paraffin-embedded human placenta tissue slide using 21841-1-AP (Collagen Type XI antibody) at dilution of 1:200 (under 40x lens). Heat mediated antigen retrieval with Tris-EDTA buffer (pH 9.0). This data was developed using the same antibody clone with 21841-1-PBS in a different storage buffer formulation.



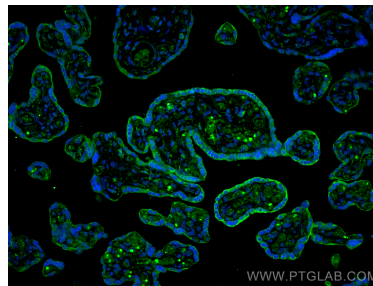
Immunohistochemical analysis of paraffin-embedded human placenta tissue slide using 21841-1-AP (Collagen Type XI antibody) at dilution of 1:200 (under 10x lens). Heat mediated antigen retrieval with Tris-EDTA buffer (pH 9.0). This data was developed using the same antibody clone with 21841-1-PBS in a different storage buffer formulation.



Immunohistochemical analysis of paraffin-embedded human stomach cancer tissue slide using 21841-1-AP (Collagen Type XI antibody) at dilution of 1:1000 (under 10x lens). Heat mediated antigen retrieval with Tris-EDTA buffer (pH 9.0). This data was developed using the same antibody clone with 21841-1-PBS in a different storage buffer formulation.



Immunohistochemical analysis of paraffin-embedded human stomach cancer tissue slide using 21841-1-AP (Collagen Type XI antibody) at dilution of 1:1000 (under 40x lens). Heat mediated antigen retrieval with Tris-EDTA buffer (pH 9.0). This data was developed using the same antibody clone with 21841-1-PBS in a different storage buffer formulation.



Immunofluorescent analysis of (4% PFA) fixed paraffin-embedded human placenta tissue using Collagen Type XI antibody (21841-1-AP) at dilution of 1:200 and Multi-rAb CoraLite @ Plus 488-Goat Anti-Rabbit Recombinant Secondary Antibody (H+L) (RGAR002). Heat mediated antigen retrieval with Tris-EDTA buffer (pH 9.0). This data was developed using the same antibody clone with 21841-1-PBS in a different storage buffer formulation.