

For Research Use Only

MASP1 Polyclonal antibody

Catalog Number: 21837-1-AP **2 Publications**



Basic Information

Catalog Number: 21837-1-AP	GenBank Accession Number: BC106945	Purification Method: Antigen affinity purification
Size: 400 µg/ml	GeneID (NCBI): 5648	Recommended Dilutions: WB 1:200-1:1000 IHC 1:100-1:400
Source: Rabbit	UNIPROT ID: P48740	
Isotype: IgG	Full Name: mannan-binding lectin serine peptidase 1 (C4/C2 activating component of Ra-reactive factor)	
Immunogen Catalog Number: AG16432	Calculated MW: 728 aa, 82 kDa	
	Observed MW: 40-70 kDa	

Applications

Tested Applications: IHC, WB, ELISA	Positive Controls:
Cited Applications: WB, IP, IF, IHC	WB: HeLa cells,
Species Specificity: human	IHC: human liver cancer tissue,
Cited Species: human, mouse	
Note-IHC: suggested antigen retrieval with TE buffer pH 9.0; (*) Alternatively, antigen retrieval may be performed with citrate buffer pH 6.0	

Background Information

Notable Publications

Author	Pubmed ID	Journal	Application
Xianzhi Liu	35849032	Hepatology	WB, IHC, IP
Binshan Zhang	36582241	Front Immunol	IF

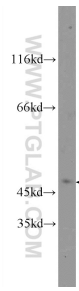
Storage

Storage:
Store at -20°C. Stable for one year after shipment.
Storage Buffer:
PBS with 0.02% sodium azide and 50% glycerol pH 7.3.
Aliquoting is unnecessary for -20°C storage

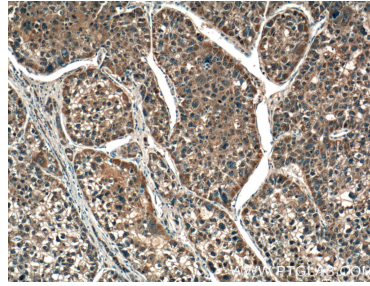
For technical support and original validation data for this product please contact:
T: 4006900926 E: Proteintech-CN@ptglab.com W: ptgcn.com

This product is exclusively available under Proteintech Group brand and is not available to purchase from any other manufacturer.

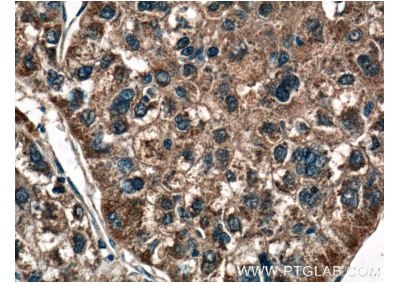
Selected Validation Data



HeLa cells were subjected to SDS PAGE followed by western blot with 21837-1-AP (MASP1 Antibody) at dilution of 1:300 incubated at room temperature for 1.5 hours.



Immunohistochemical analysis of paraffin-embedded human liver cancer tissue slide using 21837-1-AP (MASP1 Antibody) at dilution of 1:200 (under 10x lens).



Immunohistochemical analysis of paraffin-embedded human liver cancer tissue slide using 21837-1-AP (MASP1 Antibody) at dilution of 1:200 (under 40x lens).