

For Research Use Only

# EZH2 Polyclonal antibody, PBS Only

Catalog Number: 21800-1-PBS

Featured Product



## Basic Information

**Catalog Number:**

21800-1-PBS

**Source:**

Rabbit

**Isotype:**

IgG

**Immunogen Catalog Number:**

AG16789

**GenBank Accession Number:**

BC010858

**GeneID (NCBI):**

2146

**UNIPROT ID:**

Q15910

**Full Name:**

enhancer of zeste homolog 2  
(Drosophila)

**Calculated MW:**

751 aa, 86 kDa

**Observed MW:**

90-102 kDa

**Purification Method:**

Antigen affinity purification

## Applications

**Tested Applications:**

WB, IF/ICC, FC (Intra), IP, Indirect ELISA

**Species Specificity:**

human, mouse, rat

## Background Information

EZH2 (enhancer of zeste homologue 2, also known as KMT6) is a member of Polycomb group (PcG) family and encodes a histone methyl transferase that has an essential role in promoting histone H3 lysine 27 trimethylation (H3K27me3) and epigenetic gene silencing. EZH2 is important for cell proliferation and inhibition of cell differentiation, and is implicated in cancer progression. Overexpression of EZH2 is a marker of advanced and metastatic disease in many solid tumors, including prostate and breast cancer. This antibody detected EZH2 protein as a single band with a molecular weight (MW) of 91-100 kDa in multiple cell lines. The phosphorylation may result in the higher molecular weight (calculated MW as 80-86 kDa). (20935635, 21367748)

## Storage

**Storage:**

Store at -80°C.

**The product is shipped with ice packs. Upon receipt, store it immediately at -80°C**

**Storage Buffer:**

PBS only, pH7.3

For technical support and original validation data for this product please contact:

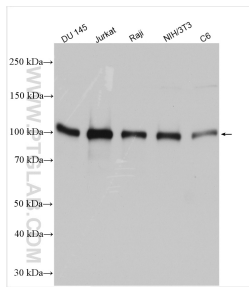
T: 4006900926

E: [Proteintech-CN@ptglab.com](mailto:Proteintech-CN@ptglab.com)

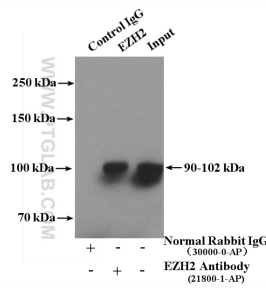
W: [ptgcn.com](http://ptgcn.com)

**This product is exclusively available under Proteintech Group brand and is not available to purchase from any other manufacturer.**

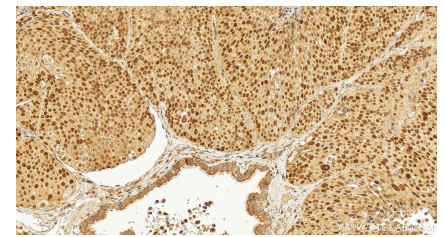
## Selected Validation Data



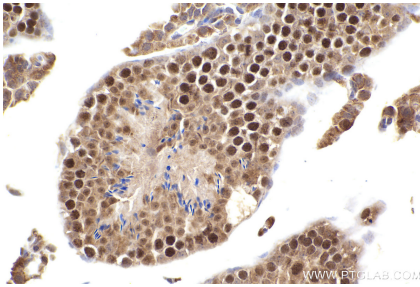
Various lysates were subjected to SDS PAGE followed by western blot with 21800-1-AP (EZH2 antibody) at dilution of 1:10000 incubated at room temperature for 1.5 hours. This data was developed using the same antibody clone with 21800-1-PBS in a different storage buffer formulation.



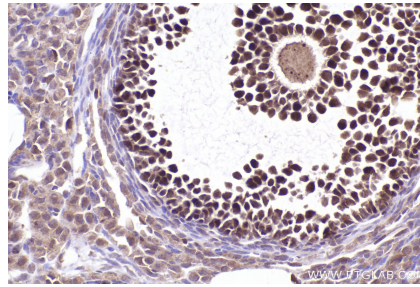
IP result of anti-EZH2 (IP:21800-1-AP, 4ug; Detection:21800-1-AP 1:1000) with HepG2 cells lysate 3400ug. This data was developed using the same antibody clone with 21800-1-PBS in a different storage buffer formulation.



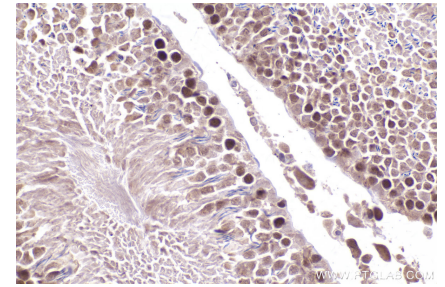
Immunohistochemical analysis of paraffin-embedded human lung squamous cell carcinoma tissue slide using 21800-1-AP (EZH2 antibody) at dilution of 1:2000 (under 20x lens). Heat mediated antigen retrieval with Tris-EDTA buffer (pH 9.0). This data was developed using the same antibody clone with 21800-1-PBS in a different storage buffer formulation.



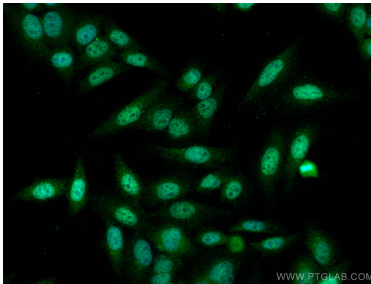
Immunohistochemical analysis of paraffin-embedded mouse testis tissue slide using 21800-1-AP (EZH2 antibody) at dilution of 1:2000 (under 40x lens). Heat mediated antigen retrieval with Tris-EDTA buffer (pH 9.0). This data was developed using the same antibody clone with 21800-1-PBS in a different storage buffer formulation.



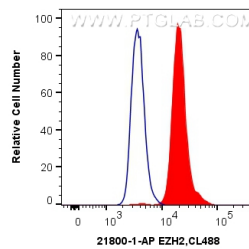
Immunohistochemical analysis of paraffin-embedded mouse ovary tissue slide using 21800-1-AP (EZH2 antibody) at dilution of 1:2000 (under 40x lens). Heat mediated antigen retrieval with Tris-EDTA buffer (pH 9.0). This data was developed using the same antibody clone with 21800-1-PBS in a different storage buffer formulation.



Immunohistochemical analysis of paraffin-embedded rat testis tissue slide using 21800-1-AP (EZH2 antibody) at dilution of 1:2000 (under 40x lens). Heat mediated antigen retrieval with Tris-EDTA buffer (pH 9.0). This data was developed using the same antibody clone with 21800-1-PBS in a different storage buffer formulation.



Immunofluorescent analysis of (4% PFA) fixed HepG2 cells using EZH2 antibody (21800-1-AP) at dilution of 1:800 and CoraLite®488-Conjugated AffiniPure Goat Anti-Rabbit IgG(H+L). This data was developed using the same antibody clone with 21800-1-PBS in a different storage buffer formulation.



1X10<sup>6</sup> HepG2 cells were intracellularly stained with 0.4 ug Anti-Human EZH2 (21800-1-AP) and CoraLite®488-Conjugated AffiniPure Goat Anti-Rabbit IgG(H+L) at dilution 1:1000 (red), or 0.4 ug Control Antibody. Cells were fixed and permeabilized with Transcription Factor Staining Buffer Kit (PF00011). This data was developed using the same antibody clone with 21800-1-PBS in a different storage buffer formulation.