

For Research Use Only

LDHA Polyclonal antibody

Catalog Number: 21799-1-AP

Featured Product

63 Publications



Basic Information

Catalog Number:

21799-1-AP

Concentration:

500 ug/ml

Source:

Rabbit

Isotype:

IgG

Immunogen Catalog Number:

AG16703

GenBank Accession Number:

BC067223

GeneID (NCBI):

3939

UNIPROT ID:

P00338

Full Name:

lactate dehydrogenase A

Calculated MW:

332 aa, 37 kDa

Observed MW:

32-37 kDa

Purification Method:

Antigen affinity purification

Recommended Dilutions:

WB 1:5000-1:30000

IP 0.5-4.0 ug for 1.0-3.0 mg of total protein lysate

IHC 1:20-1:200

IF/ICC 1:50-1:500

Applications

Tested Applications:

WB, IHC, IF/ICC, IP, ELISA

Cited Applications:

WB, IHC, IF, IP

Species Specificity:

human, mouse, rat

Cited Species:

human, mouse, rat, pig, monkey

Note-IHC: suggested antigen retrieval with TE buffer pH 9.0; (*) Alternatively, antigen retrieval may be performed with citrate buffer pH 6.0

Positive Controls:

WB : HEK-293 cells, MCF-7 cells, human testis tissue, A375 cells, HepG2 cells, NIH/3T3 cells, MDA-MB-231 cells, mouse kidney tissue, rat kidney tissue

IP : HEK-293 cells,

IHC : human skeletal muscle tissue,

IF/ICC : HepG2 cells,

Background Information

Lactate dehydrogenase (LDH) is composed of A subunits predominate in skeletal muscle and B subunits are abundantly produced in brain and heart. The LDHA (lactate dehydrogenase A) and COPB1 (coatomer protein complex, subunit beta 1) genes, are involved in energy metabolism and protein transport processes. Both genes might play important roles in muscle development. It has some isoforms with the molecular mass of 27-40 kDa and can form a homotetramer (PMID:11276087).

Notable Publications

Author	Pubmed ID	Journal	Application
Xiaodong Zhang	30180863	J Exp Clin Cancer Res	WB
Zhen Tan	36269388	J Cancer Res Clin Oncol	IHC, WB
Tiantian Cai	31648165	Biomed Pharmacother	WB, IHC

Storage

Storage:

Store at -20°C. Stable for one year after shipment.

Storage Buffer:

PBS with 0.02% sodium azide and 50% glycerol, pH7.3

Aliquoting is unnecessary for -20°C storage

For technical support and original validation data for this product please contact:

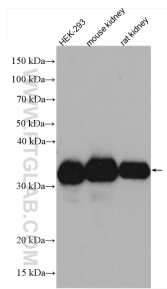
T: 4006900926

E: Proteintech-CN@ptglab.com

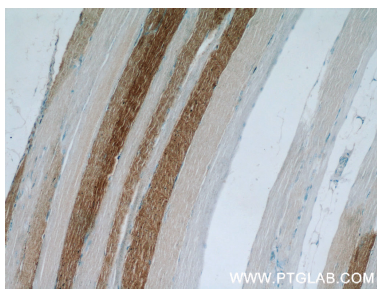
W: ptgcn.com

This product is exclusively available under Proteintech Group brand and is not available to purchase from any other manufacturer.

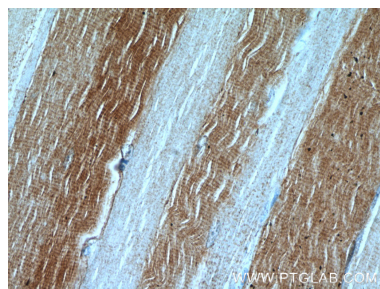
Selected Validation Data



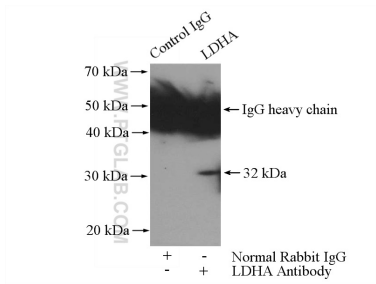
Various lysates were subjected to SDS PAGE followed by western blot with 21799-1-AP (LDHA antibody) at dilution of 1:10000 incubated at room temperature for 1.5 hours.



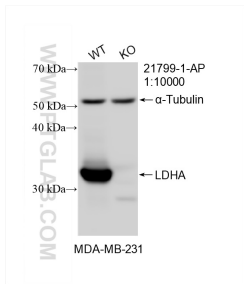
Immunohistochemical analysis of paraffin-embedded human skeletal muscle using 21799-1-AP (LDHA antibody) at dilution of 1:50 (under 10x lens).



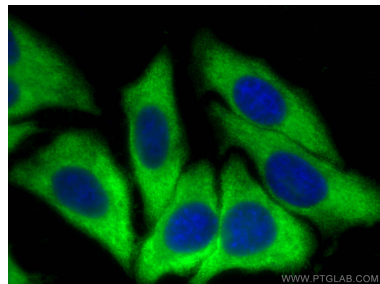
Immunohistochemical analysis of paraffin-embedded human skeletal muscle using 21799-1-AP (LDHA antibody) at dilution of 1:50 (under 40x lens).



IP result of anti-LDHA (IP: 21799-1-AP, 4ug; Detection: 21799-1-AP 1:500) with HEK-293 cells lysate 2000ug.



WB result of LDHA antibody (21799-1-AP; 1:10000; room temperature for 1.5 hours) with wild-type and LDHA knockout MDA-MB-231 cells.



Immunofluorescent analysis of (-20°C Methanol) fixed HepG2 cells using LDHA antibody (21799-1-AP) at dilution of 1:200 and CoraLite®488-Conjugated AffiniPure Goat Anti-Rabbit IgG(H+L).