

For Research Use Only

LCE1B Polyclonal antibody, PBS Only

Catalog Number: 21771-1-PBS



Basic Information

Catalog Number: 21771-1-PBS	GenBank Accession Number: BC104232	Purification Method: Antigen affinity purification
Size: 1 mg/ml	GeneID (NCBI): 353132	
Source: Rabbit	UNIPROT ID: Q5T7P3	
Isotype: IgG	Full Name: late cornified envelope 1B	
Immunogen Catalog Number: AG16442	Calculated MW: 118 aa, 12 kDa	
	Observed MW: 10-12 kDa	

Applications

Tested Applications:
WB, IHC, IF/ICC, Indirect ELISA

Species Specificity:
human, mouse, rat

Background Information

Human LCE1B (Late cornified envelope protein 1B), also named late envelope protein 2 (LEP2), is located at human Chromosome1q21 which contains multiple LCE clusters. LCE1B gene is predicated to encode a 118-aa protein, and is currently evidenced at transcript level. Its expression was skin-specific and was readily detected in adult trunk skin, adult arm skin, fetal skin, penial skin, vulva, esophagus and tongue (PMID: 15854049). LCE genes respond to environmental stimuli such as calcium levels and ultraviolet (UV) light, however, LCE groups have distinct functions (PMID: 15854049).

Storage

Storage:
Store at -80°C.
The product is shipped with ice packs. Upon receipt, store it immediately at -80°C

Storage Buffer:
PBS Only

For technical support and original validation data for this product please contact:

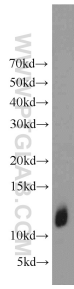
T: 4006900926

E: Proteintech-CN@ptglab.com

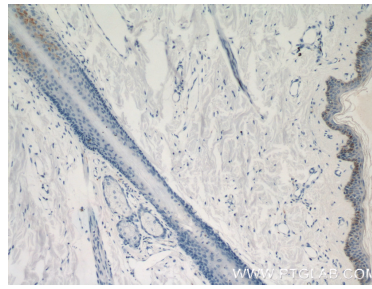
W: ptgcn.com

This product is exclusively available under Proteintech Group brand and is not available to purchase from any other manufacturer.

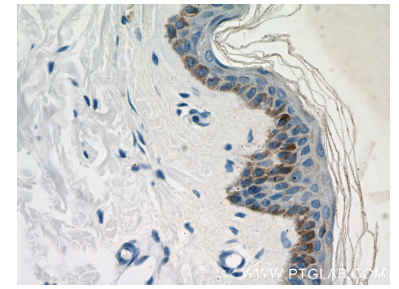
Selected Validation Data



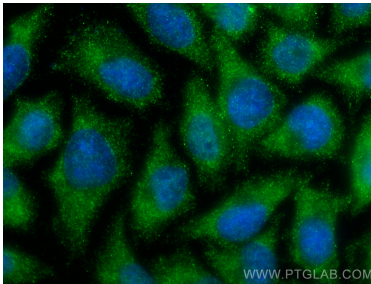
A375 cells were subjected to SDS PAGE followed by western blot with 21771-1-AP (LCE1B antibody) at dilution of 1:1000 incubated at room temperature for 1.5 hours. This data was developed using the same antibody clone with 21771-1-PBS in a different storage buffer formulation.



Immunohistochemical analysis of paraffin-embedded human skin using 21771-1-AP (LCE1B antibody) at dilution of 1:50 (under 10x lens). This data was developed using the same antibody clone with 21771-1-PBS in a different storage buffer formulation.



Immunohistochemical analysis of paraffin-embedded human skin using 21771-1-AP (LCE1B antibody) at dilution of 1:50 (under 40x lens). This data was developed using the same antibody clone with 21771-1-PBS in a different storage buffer formulation.



Immunofluorescent analysis of (-20°C Ethanol) fixed A375 cells using LCE1B antibody (21771-1-AP) at dilution of 1:400 and CoraLite®488-Conjugated Goat Anti-Rabbit IgG(H+L) (SA00013-2). This data was developed using the same antibody clone with 21771-1-PBS in a different storage buffer formulation.