

## SLC25A2 Polyclonal antibody

Catalog Number: 21764-1-AP

1 Publications

## Basic Information

## Catalog Number:

21764-1-AP

## Size:

293 µg/ml

## Source:

Rabbit

## Isotype:

IgG

## Immunogen Catalog Number:

AG16360

## GenBank Accession Number:

BC100935

## GeneID (NCBI):

83884

## UNIPROT ID:

Q9BXI2

## Full Name:

solute carrier family 25  
(mitochondrial carrier; ornithine  
transporter) member 2

## Calculated MW:

301 aa, 33 kDa

## Observed MW:

30-33 kDa

## Purification Method:

Antigen affinity purification

## Recommended Dilutions:

WB 1:500-1:3000

IHC 1:20-1:200

## Applications

## Tested Applications:

IHC, WB, ELISA

## Cited Applications:

WB

## Species Specificity:

human, mouse, rat

## Cited Species:

human

**Note-IHC: suggested antigen retrieval with  
TE buffer pH 9.0; (\*) Alternatively, antigen  
retrieval may be performed with citrate  
buffer pH 6.0**

## Positive Controls:

WB : mouse kidney tissue, HeLa cells, mouse liver  
tissue

IHC : human liver tissue, human kidney tissue

## Background Information

## Notable Publications

Author	Pubmed ID	Journal	Application
Dan Nakano	32343721	PLoS One	WB

## Storage

## Storage:

Store at -20°C. Stable for one year after shipment.

## Storage Buffer:

PBS with 0.02% sodium azide and 50% glycerol pH 7.3.

Aliquoting is unnecessary for -20°C storage

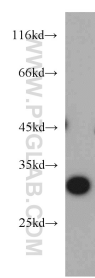
For technical support and original validation data for this product please contact:

T: 4006900926

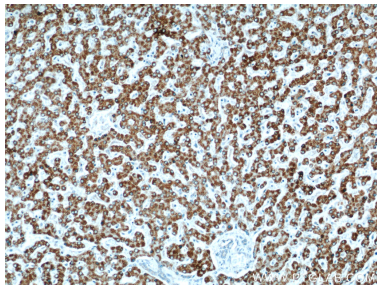
E: [Proteintech-CN@ptglab.com](mailto:Proteintech-CN@ptglab.com)W: [ptgcn.com](http://ptgcn.com)

**This product is exclusively available under Proteintech  
Group brand and is not available to purchase from any  
other manufacturer.**

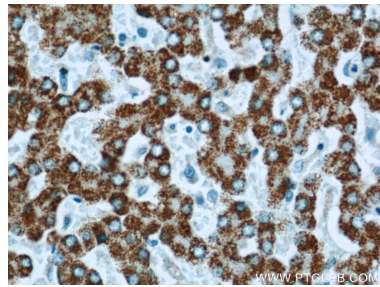
Selected Validation Data



mouse kidney tissue were subjected to SDS PAGE followed by western blot with 21764-1-AP (SLC25A2 antibody) at dilution of 1:500 incubated at room temperature for 1.5 hours.



Immunohistochemical analysis of paraffin-embedded human liver using 21764-1-AP (SLC25A2 antibody) at dilution of 1:50 (under 10x lens).



Immunohistochemical analysis of paraffin-embedded human liver using 21764-1-AP (SLC25A2 antibody) at dilution of 1:50 (under 40x lens).