

For Research Use Only

# HSPB2 Polyclonal antibody

Catalog Number: 21755-1-AP **2 Publications**



## Basic Information

<b>Catalog Number:</b> 21755-1-AP	<b>GenBank Accession Number:</b> BC109393	<b>Purification Method:</b> Antigen affinity purification
<b>Size:</b> 200 µg/ml	<b>GeneID (NCBI):</b> 3316	<b>Recommended Dilutions:</b> WB 1:500-1:1000 IHC 1:20-1:200 IF 1:10-1:100
<b>Source:</b> Rabbit	<b>UNIPROT ID:</b> Q16082	
<b>Isotype:</b> IgG	<b>Full Name:</b> heat shock 27kDa protein 2	
<b>Immunogen Catalog Number:</b> AG16146	<b>Calculated MW:</b> 182 aa, 20 kDa	
	<b>Observed MW:</b> 20-25 kDa	

## Applications

<b>Tested Applications:</b> IF/ICC, IHC, WB, ELISA	<b>Positive Controls:</b> WB : human skeletal muscle tissue, rat heart tissue IHC : human heart tissue, human skeletal muscle tissue IF : HepG2 cells,
<b>Cited Applications:</b> WB, IHC	
<b>Species Specificity:</b> human, rat	
<b>Cited Species:</b> human	
<b>Note-IHC: suggested antigen retrieval with TE buffer pH 9.0; (*) Alternatively, antigen retrieval may be performed with citrate buffer pH 6.0</b>	

## Background Information

### Notable Publications

Author	Pubmed ID	Journal	Application
An-An Yin	31088577	Clin Epigenetics	WB, IHC
Weifang Yu	35154459	J Cancer	WB

## Storage

**Storage:**  
Store at -20°C. Stable for one year after shipment.  
**Storage Buffer:**  
PBS with 0.02% sodium azide and 50% glycerol pH 7.3.  
Aliquoting is unnecessary for -20°C storage

For technical support and original validation data for this product please contact:

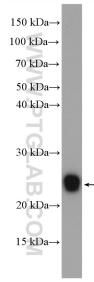
T: 4006900926

E: Proteintech-CN@ptglab.com

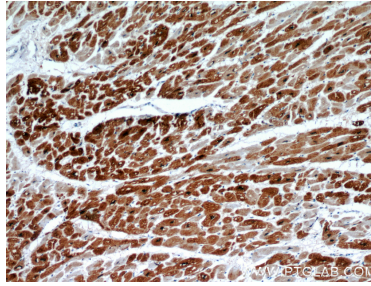
W: ptgcn.com

**This product is exclusively available under Proteintech Group brand and is not available to purchase from any other manufacturer.**

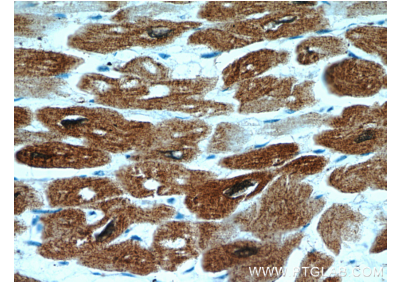
## Selected Validation Data



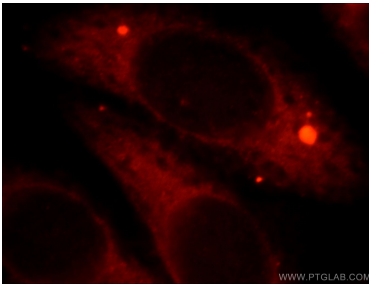
human skeletal muscle tissue were subjected to SDS PAGE followed by western blot with 21755-1-AP (HSPB2 antibody) at dilution of 1:500 incubated at 4 degree celsius over night.



Immunohistochemical analysis of paraffin-embedded human heart using 21755-1-AP (HSPB2 antibody) at dilution of 1:50 (under 10x lens).



Immunohistochemical analysis of paraffin-embedded human heart using 21755-1-AP (HSPB2 antibody) at dilution of 1:50 (under 40x lens).



Immunofluorescent analysis of HepG2 cells, using HSPB2 antibody 21755-1-AP at 1:25 dilution and Rhodamine-labeled goat anti-rabbit IgG (red).