

For Research Use Only

PDE4C Polyclonal antibody

Catalog Number: 21754-1-AP **4 Publications**



Basic Information

Catalog Number: 21754-1-AP	GenBank Accession Number: BC109067	Purification Method: Antigen affinity purification
Size: 300 µg/ml	GeneID (NCBI): 5143	Recommended Dilutions: WB 1:200-1:1000
Source: Rabbit	UNIPROT ID: Q08493	
Isotype: IgG	Full Name: phosphodiesterase 4C, cAMP-specific (phosphodiesterase E1 dunce homolog, Drosophila)	
Immunogen Catalog Number: AG16130	Calculated MW: 712 aa, 80 kDa	
	Observed MW: ~70 kDa	

Applications

Tested Applications: WB, ELISA	Positive Controls: WB : HEK-293 cells, mouse lung tissue
Cited Applications: WB	
Species Specificity: human, mouse	
Cited Species: human, mouse	

Background Information

PDE4C (cAMP-specific 3,5-cyclic phosphodiesterase 4C) is also named as DPDE1 and belongs to the PDE4 subfamily, which play a key role in lung inflammation and hyperresponsiveness. PDE4C promotes the hydrolysis of cAMP, and PKD2, functioning as a Ca²⁺ entry channel, may mediate local accumulation of Ca²⁺ that inhibits the activity of Ca²⁺-sensitive ADCY5 (PMID:21670265). The three isoforms (84, 75, and 64 kDa) of PDE4C have been detected in cytosolic, microsomal, and nuclear (PMID:21784969).

Notable Publications

Author	Pubmed ID	Journal	Application
Matthew Riopel	32534258	Mol Metab	WB
Man Xu	31961716	Am J Physiol Renal Physiol	WB
Heng Li	32251674	Biochem Pharmacol	WB

Storage

Storage:
Store at -20°C. Stable for one year after shipment.
Storage Buffer:
PBS with 0.02% sodium azide and 50% glycerol pH 7.3.
Aliquoting is unnecessary for -20°C storage

For technical support and original validation data for this product please contact:

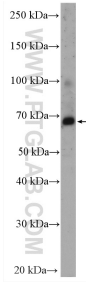
T: 4006900926

E: Proteintech-CN@ptglab.com

W: ptgcn.com

This product is exclusively available under Proteintech Group brand and is not available to purchase from any other manufacturer.

Selected Validation Data



HEK-293 cells were subjected to SDS PAGE followed by western blot with 21754-1-AP (PDE4C antibody) at dilution of 1:300 incubated at room temperature for 1.5 hours.