

For Research Use Only

# HIGD1A Polyclonal antibody

Catalog Number: 21749-1-AP

Featured Product

9 Publications



## Basic Information

Catalog Number:

21749-1-AP

Concentration:

500 ug/ml

Source:

Rabbit

Isotype:

IgG

Immunogen Catalog Number:

AG14027

GenBank Accession Number:

BC000601

GeneID (NCBI):

25994

UNIPROT ID:

Q9Y241

Full Name:

HIG1 hypoxia inducible domain family, member 1A

Calculated MW:

93 aa, 10 kDa

Observed MW:

10 kDa

Purification Method:

Antigen affinity purification

Recommended Dilutions:

WB 1:500-1:2000

IF/ICC 1:200-1:800

## Applications

Tested Applications:

WB, IF/ICC, ELISA

Cited Applications:

WB, IF, IP

Species Specificity:

human

Cited Species:

human

Positive Controls:

WB : HEK-293T cells, HeLa cells, rat brain tissue, rat kidney tissue, HepG2 cells

IF/ICC : HepG2 cells,

## Background Information

HIG1 domain family member 1A (HIGD1A) is a proposed subunit of cytochrome c oxidase (COX, complex IV), which is the terminal component of the mitochondrial respiratory chain that catalyzes the reduction of oxygen to water. May play a role in the assembly of respiratory supercomplexes (22342701). It is induced by hypoxia induction. This antibody is a rabbit polyclonal antibody raised against a full-length human HIGD1A protein.

## Notable Publications

Author	Pubmed ID	Journal	Application
Zhenyu Xu	34787061	Bioengineered	WB
Daniella H Hock	33451405	Mol Cell Proteomics	WB
Takaharu Hayashi	25605899	Proc Natl Acad Sci U S A	WB, IF, IP

## Storage

Storage:

Store at -20°C. Stable for one year after shipment.

Storage Buffer:

PBS with 0.02% sodium azide and 50% glycerol pH 7.3.

Aliquoting is unnecessary for -20°C storage

For technical support and original validation data for this product please contact:

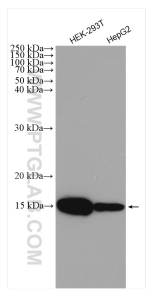
T: 4006900926

E: [Proteintech-CN@ptglab.com](mailto:Proteintech-CN@ptglab.com)

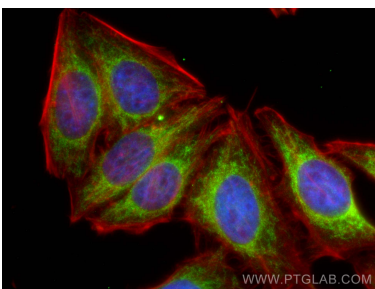
W: [ptgcn.com](http://ptgcn.com)

This product is exclusively available under Proteintech Group brand and is not available to purchase from any other manufacturer.

## Selected Validation Data



Various lysates were subjected to SDS PAGE followed by western blot with 21749-1-AP (HIGD1A antibody) at dilution of 1:1000 incubated at room temperature for 1.5 hours.



Immunofluorescent analysis of (4% PFA) fixed HepG2 cells using HIGD1A antibody (21749-1-AP) at dilution of 1:400 and CoraLite®488-Conjugated AffiniPure Goat Anti-Rabbit IgG(H+L), CL594-Phalloidin (red).