

For Research Use Only

Integrin beta 4 Polyclonal antibody

Catalog Number: 21738-1-AP

Featured Product

26 Publications



Basic Information

Catalog Number:

21738-1-AP

Source:

Rabbit

Isotype:

IgG

Immunogen Catalog Number:

AG16450

GenBank Accession Number:

BC126411

GeneID (NCBI):

3691

UNIPROT ID:

P16144

Full Name:

integrin, beta 4

Calculated MW:

1752 aa, 195 kDa

Observed MW:

200-240 kDa

Purification Method:

Antigen affinity purification

Recommended Dilutions:

WB: 1:500-1:1000

IP: 0.5-4.0 ug for 1.0-3.0 mg of total protein lysate

IHC: 1:300-1:1200

IF/ICC: 1:200-1:800

Applications

Tested Applications:

WB, IHC, IF/ICC, IP, ELISA

Cited Applications:

WB, IHC, IF, IP, CoIP

Species Specificity:

human, mouse, rat

Cited Species:

human, mouse, rat

Note-IHC: suggested antigen retrieval with TE buffer pH 9.0; (*) Alternatively, antigen retrieval may be performed with citrate buffer pH 6.0

Positive Controls:

WB: BxPC-3 cells, A431 cells, A549 cells, HT-29 cells, HeLa cells, MCF-7 cells

IP: HeLa cells,

IHC: mouse colon tissue, human placenta tissue, human pancreas cancer tissue, human breast cancer tissue

IF/ICC: A431 cells,

Background Information

Integrins are cell adhesion receptors that are heterodimers composed of non-covalently associated alpha and beta subunits. Integrin beta-4 is predominantly expressed in squamous epithelial cells, endothelial cells, immature thymocytes, Schwann cells, and fibroblasts of the peripheral nervous system (PMID: 28084395). Integrin beta-4 pairs with alpha-6, and the heterodimeric integrin alpha-6/beta-4 is a receptor for laminin. Integrin alpha-6/beta-4 plays a critical structural role in the hemidesmosome of epithelial cells, and also plays a role in the invasive and metastatic phenotype of various cancers.

Notable Publications

Author	Pubmed ID	Journal	Application
Yueqi Li	30378153	J Cell Biochem	WB
Hongfei Liu	36293483	Int J Mol Sci	WB,IF
Junya Ning	36203272	Cell Adh Migr	WB

Storage

Storage:

Store at -20°C. Stable for one year after shipment.

Storage Buffer:

PBS with 0.02% sodium azide and 50% glycerol, pH7.3

Aliquoting is unnecessary for -20°C storage

For technical support and original validation data for this product please contact:

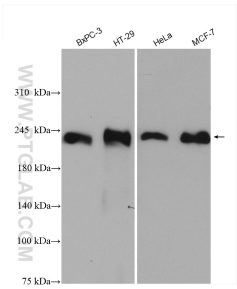
T: 4006900926

E: Proteintech-CN@ptglab.com

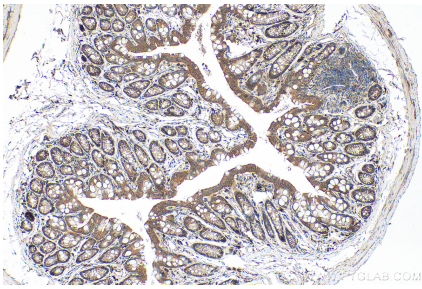
W: ptgcn.com

This product is exclusively available under Proteintech Group brand and is not available to purchase from any other manufacturer.

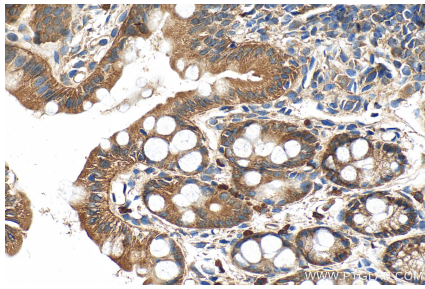
Selected Validation Data



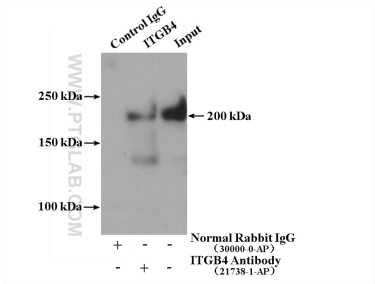
Various lysates were subjected to SDS PAGE followed by western blot with 21738-1-AP (Integrin beta-4 antibody) at dilution of 1:600 incubated at room temperature for 1.5 hours.



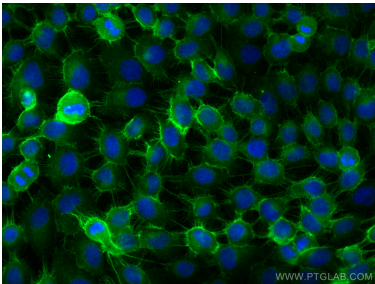
Immunohistochemical analysis of paraffin-embedded mouse colon tissue slide using 21738-1-AP (Integrin Beta 4 antibody) at dilution of 1:600 (under 10x lens). Heat mediated antigen retrieval with Tris-EDTA buffer (pH 9.0).



Immunohistochemical analysis of paraffin-embedded mouse colon tissue slide using 21738-1-AP (Integrin Beta 4 antibody) at dilution of 1:600 (under 40x lens). Heat mediated antigen retrieval with Tris-EDTA buffer (pH 9.0).



IP result of anti-Integrin Beta 4 (IP:21738-1-AP, 4ug; Detection:21738-1-AP 1:500) with HeLa cells lysate 2400ug.



Immunofluorescent analysis of (-20°C Methanol) fixed A431 cells using Integrin Beta 4 antibody (21738-1-AP) at dilution of 1:400 and CoraLite® 488-Conjugated AffiniPure Goat Anti-Rabbit IgG(H+L) (SA00013-2).