

## SLC15A1/PEPT1 Polyclonal antibody

Catalog Number: 21726-1-AP

1 Publications

## Basic Information

## Catalog Number:

21726-1-AP

## Size:

300 µg/ml

## Source:

Rabbit

## Isotype:

IgG

## Immunogen Catalog Number:

AG16390

## GenBank Accession Number:

BC096327

## GeneID (NCBI):

6564

## UNIPROT ID:

P46059

## Full Name:

solute carrier family 15 (oligopeptide transporter), member 1

## Calculated MW:

708 aa, 79 kDa

## Observed MW:

70-80 kDa

## Purification Method:

Antigen affinity purification

## Recommended Dilutions:

WB 1:500-1:2000

## Applications

## Tested Applications:

WB, ELISA

## Cited Applications:

IHC

## Species Specificity:

human, mouse

## Cited Species:

human

## Positive Controls:

WB: COLO 320 cells, Caco-2 cells, HT-29 cells, MOLT-4 cells, mouse small intestine tissue

## Background Information

SLC15A1/PEPT1 is a peptide transporter that transports oligopeptides of 2 to 4 amino acids with a preference for dipeptides. PEPT1 mediates transepithelial transport of muramyl and N-formylated bacterial dipeptides contributing to recognition of pathogenic bacteria by the mucosal immune system. PEPT1 is primarily expressed in the small intestine (PMID: 22194420). PEPT1 is also expressed in distal colon in rodents and humans and contributes to water absorption. 71 kDa nonglycosylated PEPT1 protein can be detected (PMID: 23660505).

## Notable Publications

Author	Pubmed ID	Journal	Application
Kumi Ogihara	28416355	Photodiagnosis Photodyn Ther	IHC

## Storage

## Storage:

Store at -20°C. Stable for one year after shipment.

## Storage Buffer:

PBS with 0.02% sodium azide and 50% glycerol pH 7.3.

Aliquoting is unnecessary for -20°C storage

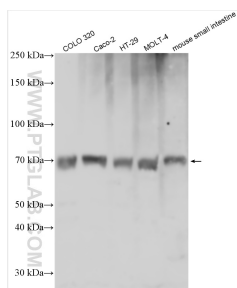
For technical support and original validation data for this product please contact:

T: 4006900926

E: [Proteintech-CN@ptglab.com](mailto:Proteintech-CN@ptglab.com)W: [ptgcn.com](http://ptgcn.com)

This product is exclusively available under Proteintech Group brand and is not available to purchase from any other manufacturer.

## Selected Validation Data



Various lysates were subjected to SDS PAGE followed by western blot with 21726-1-AP (SLC15A1 antibody) at dilution of 1:1000 incubated at room temperature for 1.5 hours.