

Cytokeratin 2e Polyclonal antibody

Catalog Number: 21725-1-AP

1 Publications

Basic Information

Catalog Number:

21725-1-AP

Size:

380 µg/ml

Source:

Rabbit

Isotype:

IgG

Immunogen Catalog Number:

AG16384

GenBank Accession Number:

BC096294

GeneID (NCBI):

3849

UNIPROT ID:

P35908

Full Name:

keratin 2

Calculated MW:

639 aa, 66 kDa

Observed MW:

65 kDa

Purification Method:

Antigen affinity purification

Recommended Dilutions:

WB 1:5000-1:50000

IHC 1:500-1:2000

Applications

Tested Applications:

IHC, WB, ELISA

Cited Applications:

IF

Species Specificity:

human, mouse, rat

Cited Species:

human

Note-IHC: suggested antigen retrieval with TE buffer pH 9.0; (*) Alternatively, antigen retrieval may be performed with citrate buffer pH 6.0

Positive Controls:

WB : A431 cells, mouse skin tissue, rat skin tissue.

IHC : human cervical cancer tissue, human oesophagus cancer tissue

Background Information

Keratins are a large family of proteins that form the intermediate filament cytoskeleton of epithelial cells. Keratin expression is highly regulated, tissue specific, and varies according to cell-state. Type I keratins consist of acidic, low molecular weight proteins with MW ranging from 40 kDa (KRT19) to 64 kDa (KRT9). Type 2 keratins consist of basic or neutral, high molecular weight proteins with MW from 52 kDa (KRT8) to 67 kDa (KRT18). Keratin 2 is a type II cytokeratin. It is found largely in the upper spinous layer of epidermal keratinocytes, and also in other regions, notably the epidermis covering the knee, thigh, and groin.

Notable Publications

| Author | Pubmed ID | Journal | Application |
|------------|-----------|------------------------|-------------|
| Wenjing Wu | 38472014 | Cont Lens Anterior Eye | IF |

Storage

Storage:

Store at -20°C. Stable for one year after shipment.

Storage Buffer:

PBS with 0.02% sodium azide and 50% glycerol pH 7.3.

Aliquoting is unnecessary for -20°C storage

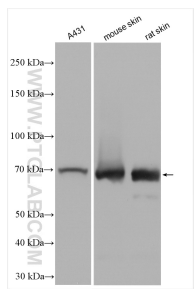
For technical support and original validation data for this product please contact:

T: 4006900926

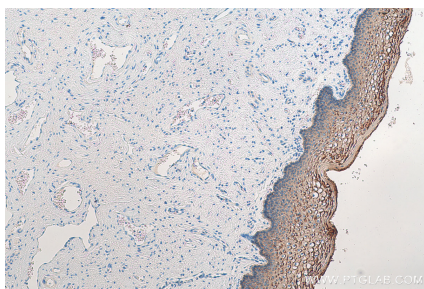
E: Proteintech-CN@ptglab.comW: ptgcn.com

This product is exclusively available under Proteintech Group brand and is not available to purchase from any other manufacturer.

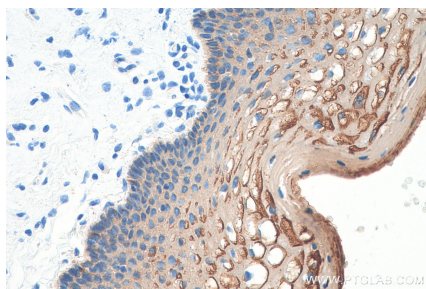
Selected Validation Data



Various lysates were subjected to SDS PAGE followed by western blot with 21725-1-AP (KRT2 antibody) at dilution of 1:20000 incubated at room temperature for 1.5 hours.



Immunohistochemical analysis of paraffin-embedded human cervical cancer tissue slide using 21725-1-AP (KRT2 antibody) at dilution of 1:1000 (under 10x lens). Heat mediated antigen retrieval with Tris-EDTA buffer (pH 9.0).



Immunohistochemical analysis of paraffin-embedded human cervical cancer tissue slide using 21725-1-AP (KRT2 antibody) at dilution of 1:1000 (under 40x lens). Heat mediated antigen retrieval with Tris-EDTA buffer (pH 9.0).