

For Research Use Only

GCM1 Polyclonal antibody

Catalog Number: 21724-1-AP

2 Publications



Basic Information

Catalog Number:

21724-1-AP

Size:

200 µg/ml

Source:

Rabbit

Isotype:

IgG

Immunogen Catalog Number:

AG16383

GenBank Accession Number:

BC096288

GeneID (NCBI):

8521

UNIPROT ID:

Q9NP62

Full Name:

glial cells missing homolog 1
(Drosophila)

Calculated MW:

436 aa, 49 kDa

Observed MW:

45-50 kDa

Purification Method:

Antigen affinity purification

Recommended Dilutions:

WB 1:200-1:1000

Applications

Tested Applications:

WB, ELISA

Cited Applications:

WB

Species Specificity:

human

Cited Species:

human

Positive Controls:

WB : HepG2 cells, HeLa cells

Background Information

Notable Publications

Author	Pubmed ID	Journal	Application
Wei Peng	33757527	Reprod Biol Endocrinol	WB
Jiayi Wu	38317232	BMC Med	WB

Storage

Storage:

Store at -20°C. Stable for one year after shipment.

Storage Buffer:

PBS with 0.02% sodium azide and 50% glycerol pH 7.3.

Aliquoting is unnecessary for -20°C storage

For technical support and original validation data for this product please contact:

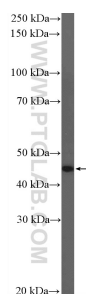
T: 4006900926

E: Proteintech-CN@ptglab.com

W: ptgcn.com

This product is exclusively available under Proteintech Group brand and is not available to purchase from any other manufacturer.

Selected Validation Data



HepG2 cells were subjected to SDS PAGE followed by western blot with 21724-1-AP (GCM1 Antibody) at dilution of 1:300 incubated at room temperature for 1.5 hours.