

For Research Use Only

# CYP2A6 Polyclonal antibody

Catalog Number: 21721-1-AP

7 Publications



## Basic Information

Catalog Number:

21721-1-AP

Concentration:

400 µg/ml

Source:

Rabbit

Isotype:

IgG

Immunogen Catalog Number:

AG16377

GenBank Accession Number:

BC096253

GeneID (NCBI):

1548

UNIPROT ID:

P11509

Full Name:

cytochrome P450, family 2, subfamily A, polypeptide 6

Calculated MW:

494 aa, 57 kDa

Observed MW:

50 kDa

Purification Method:

Antigen affinity purification

Recommended Dilutions:

WB: 1:2000-1:10000

IHC: 1:50-1:500

## Applications

Tested Applications:

WB, IHC, ELISA

Cited Applications:

WB, IHC

Species Specificity:

human, mouse, rat

Cited Species:

human, mouse

**Note-IHC: suggested antigen retrieval with TE buffer pH 9.0; (\*) Alternatively, antigen retrieval may be performed with citrate buffer pH 6.0**

Positive Controls:

WB: mouse liver tissue, HepG2 cells, mouse lung tissue, rat liver tissue

IHC: human liver tissue, human liver cancer tissue

## Background Information

### Notable Publications

Author	Pubmed ID	Journal	Application
Ashley A Untereiner	29061341	Biochem Pharmacol	WB
Shotaro Uehara	35416115	Xenobiotica	WB
Yi-Fan Liu	40069491	Acta Pharmacol Sin	WB, IHC

## Storage

Storage:

Store at -20°C. Stable for one year after shipment.

Storage Buffer:

PBS with 0.02% sodium azide and 50% glycerol, pH7.3

Aliquoting is unnecessary for -20°C storage

For technical support and original validation data for this product please contact:

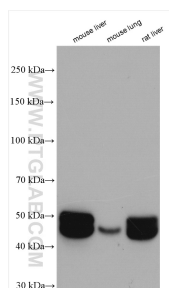
T: 4006900926

E: [Proteintech-CN@ptglab.com](mailto:Proteintech-CN@ptglab.com)

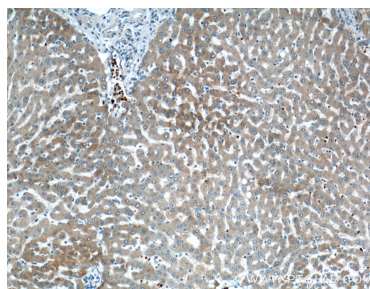
W: [ptgcn.com](http://ptgcn.com)

This product is exclusively available under Proteintech Group brand and is not available to purchase from any other manufacturer.

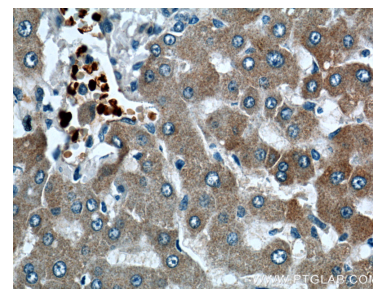
## Selected Validation Data



Various lysates were subjected to SDS PAGE followed by western blot with 21721-1-AP (CYP2A6 antibody) at dilution of 1:5000 incubated at room temperature for 1.5 hours.



Immunohistochemical analysis of paraffin-embedded human liver tissue slide using 21721-1-AP (CYP2A6 Antibody) at dilution of 1:200 (under 10x lens).



Immunohistochemical analysis of paraffin-embedded human liver tissue slide using 21721-1-AP (CYP2A6 Antibody) at dilution of 1:200 (under 40x lens).