

Integrin Beta 6 Polyclonal antibody

Catalog Number: 21703-1-AP

Basic Information

Catalog Number:	21703-1-AP	GenBank Accession Number:	BC121178	Purification Method:	Antigen affinity purification
Size:	500 µg/ml	GeneID (NCBI):	3694	Recommended Dilutions:	IHC 1:50-1:500
Source:	Rabbit	UNIPROT ID:	P18564		
Isotype:	IgG	Full Name:	integrin, beta 6		
Immunogen Catalog Number:	AG16319	Calculated MW:	788 aa, 86 kDa		

Applications

Tested Applications:
IHC, ELISA

Species Specificity:
human, mouse, rat

**Note-IHC: suggested antigen retrieval with
TE buffer pH 9.0; (*) Alternatively, antigen
retrieval may be performed with citrate
buffer pH 6.0**

Positive Controls:

IHC : human pancreas cancer tissue, human ovary
tumor tissue

Background Information

ITGB6 belongs to the integrin beta chain family. ITGB6 is a receptor for fibronectin and cytotactin. It recognizes the sequence R-G-D in its ligands. Internalisation of integrin alpha-V/beta-6 via clathrin-mediated endocytosis promotes carcinoma cell invasion.

Storage

Storage:
Store at -20°C. Stable for one year after shipment.
Storage Buffer:
PBS with 0.02% sodium azide and 50% glycerol pH 7.3.
Aliquoting is unnecessary for -20°C storage

For technical support and original validation data for this product please contact:

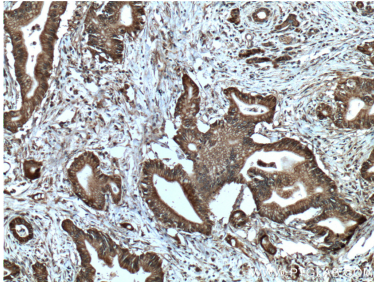
T: 4006900926

E: Proteintech-CN@ptglab.com

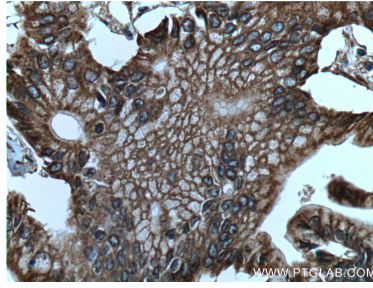
W: ptgcn.com

This product is exclusively available under Proteintech Group brand and is not available to purchase from any other manufacturer.

Selected Validation Data



Immunohistochemical analysis of paraffin-embedded human pancreas cancer tissue slide using 21703-1-AP (Integrin beta-6 Antibody) at dilution of 1:200 (under 10x lens). Heat mediated antigen retrieval with Tris-EDTA buffer (pH 9.0).



Immunohistochemical analysis of paraffin-embedded human pancreas cancer tissue slide using 21703-1-AP (Integrin beta-6 Antibody) at dilution of 1:200 (under 40x lens). Heat mediated antigen retrieval with Tris-EDTA buffer (pH 9.0).