

For Research Use Only

GPBP1 Polyclonal antibody

Catalog Number: 21622-1-AP

Featured Product

1 Publications



Basic Information

Catalog Number: 21622-1-AP	GenBank Accession Number: BC000267	Purification Method: Antigen affinity purification
Size: 233 µg/ml	GeneID (NCBI): 65056	Recommended Dilutions: WB 1:500-1:2000 IHC 1:20-1:200
Source: Rabbit	UNIPROT ID: Q86WP2	
Isotype: IgG	Full Name: GC-rich promoter binding protein 1	
Immunogen Catalog Number: AG14877	Calculated MW: 473 aa, 53 kDa	
	Observed MW: 45 kDa	

Applications

Tested Applications: IHC, WB, ELISA	Positive Controls: WB : HepG2 cells, L02 cells IHC : human small intestine tissue, human testis tissue
Cited Applications: WB, IP	
Species Specificity: human, mouse, rat	
Cited Species: mouse	
Note-IHC: suggested antigen retrieval with TE buffer pH 9.0; (*) Alternatively, antigen retrieval may be performed with citrate buffer pH 6.0	

Background Information

Notable Publications

Author	Pubmed ID	Journal	Application
Liang-Liang Fan	35596061	Exp Mol Med	WB,IP

Storage

Storage:
Store at -20°C. Stable for one year after shipment.
Storage Buffer:
PBS with 0.02% sodium azide and 50% glycerol pH 7.3.
Aliquoting is unnecessary for -20°C storage

For technical support and original validation data for this product please contact:

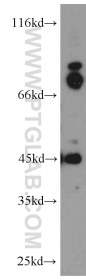
T: 4006900926

E: Proteintech-CN@ptglab.com

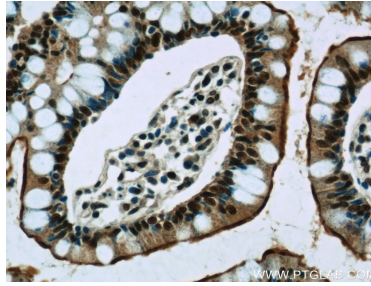
W: ptgcn.com

This product is exclusively available under Proteintech Group brand and is not available to purchase from any other manufacturer.

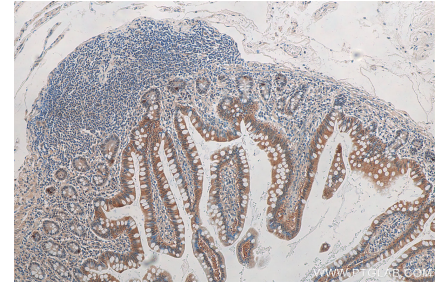
Selected Validation Data



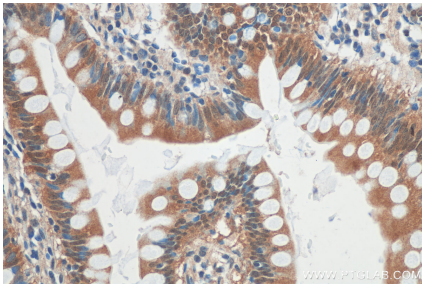
HepG2 cells were subjected to SDS PAGE followed by western blot with 21622-1-AP (GBP1 antibody) at dilution of 1:500 incubated at room temperature for 1.5 hours.



Immunohistochemical analysis of paraffin-embedded human small intestine slide using 21622-1-AP (GBP1 Antibody) at dilution of 1:50.



Immunohistochemical analysis of paraffin-embedded human small intestine tissue slide using 21622-1-AP (GBP1 antibody) at dilution of 1:300 (under 10x lens).



Immunohistochemical analysis of paraffin-embedded human small intestine tissue slide using 21622-1-AP (GBP1 antibody) at dilution of 1:300 (under 40x lens).