

For Research Use Only

TMED9 Polyclonal antibody, PBS Only

Catalog Number: 21620-1-PBS

Featured Product



Basic Information

Catalog Number:

21620-1-PBS

Source:

Rabbit

Isotype:

IgG

Immunogen Catalog Number:

AG13813

GenBank Accession Number:

BC001123

GeneID (NCBI):

54732

UNIPROT ID:

Q9BVK6

Full Name:

transmembrane emp24 protein
transport domain containing 9

Calculated MW:

235 aa, 27 kDa

Observed MW:

24-27 kDa

Purification Method:

Antigen affinity purification

Applications

Tested Applications:

WB, IHC, IF/ICC, IP, Indirect ELISA

Species Specificity:

human, mouse, rat, pig

Background Information

TMED9 (also named as GMP25, GP25L2 or p25) is a member of the EMP24/GP25L family. TMED9 probably forms hetero-oligomeric complexes with TMED7 (p27), TMED2 (p24), and TMED10 (p23) (PMID: 10359607). Located in the endoplasmic reticulum and the Golgi, TMED9 appears to be involved in vesicular protein trafficking, mainly in the early secretory pathway (PMID: 9472029; 10359607).

Storage

Storage:

Store at -80°C.

The product is shipped with ice packs. Upon receipt, store it immediately at -80°C

Storage Buffer:

PBS only, pH7.3

For technical support and original validation data for this product please contact:

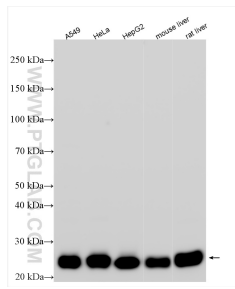
T: 4006900926

E: Proteintech-CN@ptglab.com

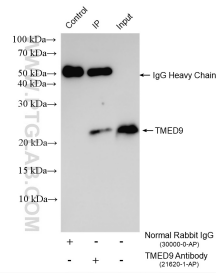
W: ptgcn.com

This product is exclusively available under Proteintech Group brand and is not available to purchase from any other manufacturer.

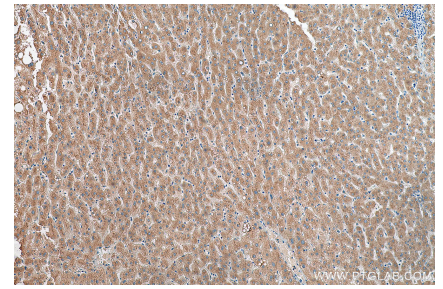
Selected Validation Data



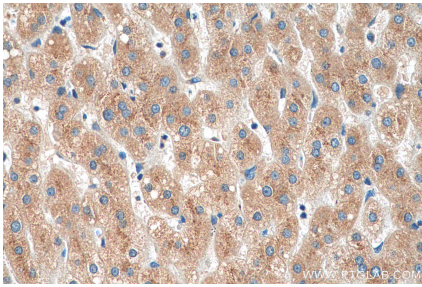
Various lysates were subjected to SDS PAGE followed by western blot with 21620-1-AP (TMED9 antibody) at dilution of 1:6000 incubated at room temperature for 1.5 hours. This data was developed using the same antibody clone with 21620-1-PBS in a different storage buffer formulation.



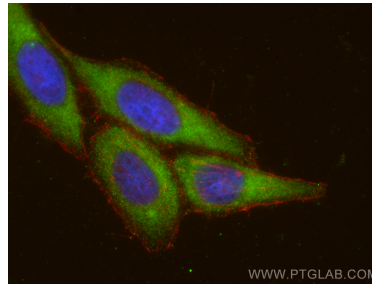
IP result of anti-TMED9 (IP:21620-1-AP, 4ug; Detection:21620-1-AP 1:4000) with HepG2 cells lysate 1600 ug. This data was developed using the same antibody clone with 21620-1-PBS in a different storage buffer formulation.



Immunohistochemical analysis of paraffin-embedded human liver tissue slide using 21620-1-AP (TMED9 antibody) at dilution of 1:200 (under 10x lens). Heat mediated antigen retrieval with Tris-EDTA buffer (pH 9.0). This data was developed using the same antibody clone with 21620-1-PBS in a different storage buffer formulation.



Immunohistochemical analysis of paraffin-embedded human liver tissue slide using 21620-1-AP (TMED9 antibody) at dilution of 1:200 (under 40x lens). Heat mediated antigen retrieval with Tris-EDTA buffer (pH 9.0). This data was developed using the same antibody clone with 21620-1-PBS in a different storage buffer formulation.



Immunofluorescent analysis of (-20°C Ethanol) fixed HepG2 cells using TMED9 antibody (21620-1-AP) at dilution of 1:200 and CoraLite®488-Conjugated AffiniPure Goat Anti-Rabbit IgG(H+L), CL594-phalloidin (red). This data was developed using the same antibody clone with 21620-1-PBS in a different storage buffer formulation.