

For Research Use Only

# MAP3K4 Polyclonal antibody

Catalog Number: 21610-1-AP

2 Publications



## Basic Information

Catalog Number:

21610-1-AP

Concentration:

300 µg/ml

Source:

Rabbit

Isotype:

IgG

Immunogen Catalog Number:

AG16254

GenBank Accession Number:

BC146770

GeneID (NCBI):

4216

UNIPROT ID:

Q9Y6R4

Full Name:

mitogen-activated protein kinase  
kinase kinase 4

Calculated MW:

1608 aa, 182 kDa

Observed MW:

170-180 kDa

Purification Method:

Antigen affinity purification

Recommended Dilutions:

WB 1:1000-1:4000

IF/ICC 1:10-1:100

## Applications

Tested Applications:

WB, IF/ICC, ELISA

Cited Applications:

WB, IF

Species Specificity:

human, mouse, rat

Cited Species:

human, mouse

Positive Controls:

WB : K-562 cells,

IF/ICC : Hela cells,

## Background Information

### Notable Publications

| Author     | Pubmed ID | Journal    | Application |
|------------|-----------|------------|-------------|
| Chengyu Li | 39805423  | J Adv Res  | WB          |
| Lele Ling  | 38282157  | J Gene Med | IF          |

## Storage

Storage:

Store at -20°C. Stable for one year after shipment.

Storage Buffer:

PBS with 0.02% sodium azide and 50% glycerol pH 7.3.

Aliquoting is unnecessary for -20°C storage

For technical support and original validation data for this product please contact:

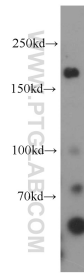
T: 4006900926

E: [Proteintech-CN@ptglab.com](mailto:Proteintech-CN@ptglab.com)

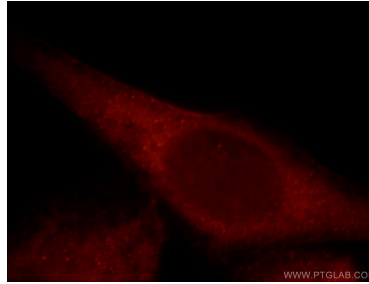
W: [ptgcn.com](http://ptgcn.com)

This product is exclusively available under Proteintech Group brand and is not available to purchase from any other manufacturer.

## Selected Validation Data



K-562 cells were subjected to SDS PAGE followed by western blot with 21610-1-AP (MAP3K4 antibody) at dilution of 1:2000 incubated at room temperature for 1.5 hours.



Immunofluorescent analysis of HeLa cells, using MAP3K4 antibody 21610-1-AP at 1:25 dilution and Rhodamine-labeled goat anti-rabbit IgG (red).