

For Research Use Only

MRPL28 Polyclonal antibody

Catalog Number: 21604-1-AP

2 Publications



Basic Information

Catalog Number:

21604-1-AP

Size:

550 µg/ml

Source:

Rabbit

Isotype:

IgG

Immunogen Catalog Number:

AG16224

GenBank Accession Number:

BC000990

GeneID (NCBI):

10573

UNIPROT ID:

Q13084

Full Name:

mitochondrial ribosomal protein L28

Calculated MW:

30 kDa

Observed MW:

30 kDa

Purification Method:

Antigen affinity purification

Recommended Dilutions:

WB 1:1000-1:4000

IP 0.5-4.0 µg for 1.0-3.0 mg of total protein lysate

IHC 1:20-1:200

IF/ICC 1:200-1:800

Applications

Tested Applications:

IF/ICC, IHC, IP, WB, ELISA

Cited Applications:

WB

Species Specificity:

human, mouse, rat

Cited Species:

human

Note-IHC: suggested antigen retrieval with TE buffer pH 9.0; (*) Alternatively, antigen retrieval may be performed with citrate buffer pH 6.0

Positive Controls:

WB: HEK-293T cells, HeLa cells, HepG2 cells, mouse kidney tissue, rat kidney tissue, JAR cells

IP: mouse brain tissue,

IHC: human kidney tissue, human testis tissue

IF/ICC: HeLa cells,

Background Information

Notable Publications

Author	Pubmed ID	Journal	Application
Zhishan Wu	37257705	J Ethnopharmacol	WB
Sumudu S C Amarasekera	37133451	Hum Mol Genet	WB

Storage

Storage:

Store at -20°C. Stable for one year after shipment.

Storage Buffer:

PBS with 0.02% sodium azide and 50% glycerol pH 7.3.

Aliquoting is unnecessary for -20°C storage

For technical support and original validation data for this product please contact:

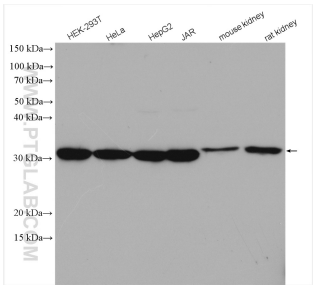
T: 4006900926

E: Proteintech-CN@ptglab.com

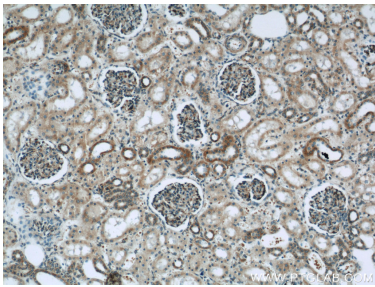
W: ptgcn.com

This product is exclusively available under Proteintech Group brand and is not available to purchase from any other manufacturer.

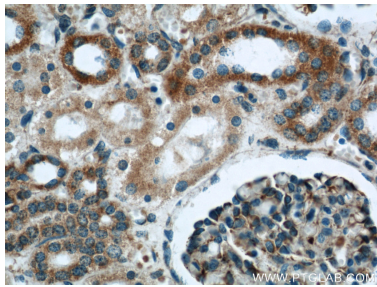
Selected Validation Data



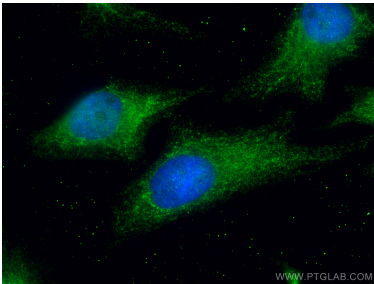
Various lysates were subjected to SDS PAGE followed by western blot with 21604-1-AP (MRPL28 antibody) at dilution of 1:2000 incubated at room temperature for 1.5 hours.



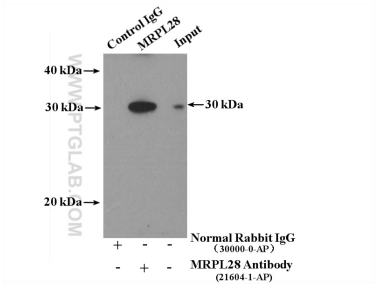
Immunohistochemical analysis of paraffin-embedded human kidney using 21604-1-AP (MRPL28 antibody) at dilution of 1:50 (under 10x lens).



Immunohistochemical analysis of paraffin-embedded human kidney using 21604-1-AP (MRPL28 antibody) at dilution of 1:50 (under 40x lens).



Immunofluorescent analysis of (4% PFA) fixed HeLa cells using MRPL28 antibody (21604-1-AP) at dilution of 1:400 and CoraLite® 488-Conjugated AffiniPure Goat Anti-Rabbit IgG(H+L).



IP result of anti-MRPL28 (IP:21604-1-AP, 4ug; Detection:21604-1-AP 1:500) with mouse brain tissue lysate 4000ug.