

# ALDH8A1 Polyclonal antibody

Catalog Number: 21602-1-AP

## Basic Information

**Catalog Number:**

21602-1-AP

**Size:**

400 µg/ml

**Source:**

Rabbit

**Isotype:**

IgG

**Immunogen Catalog Number:**

AG16214

**GenBank Accession Number:**

BC113862

**GeneID (NCBI):**

64577

**UNIPROT ID:**

Q9H2A2

**Full Name:**

aldehyde dehydrogenase 8 family,  
member A1

**Calculated MW:**

487 aa, 53 kDa

**Observed MW:**

53 kDa

**Purification Method:**

Antigen affinity purification

**Recommended Dilutions:**

WB 1:1000-1:5000

IHC 1:50-1:500

IF/ICC 1:50-1:500

## Applications

**Tested Applications:**

WB, IHC, IF/ICC, ELISA

**Species Specificity:**

human, mouse, rat

**Note-IHC: suggested antigen retrieval with  
TE buffer pH 9.0; (\*) Alternatively, antigen  
retrieval may be performed with citrate  
buffer pH 6.0**

**Positive Controls:**

**WB:** L02 cells, mouse kidney tissue, mouse liver  
tissue, rat liver tissue

**IHC:** human hepatocirrhosis tissue,

**IF/ICC:** HepG2 cells,

## Background Information

### Storage

**Storage:**

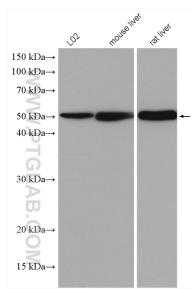
Store at -20°C. Stable for one year after shipment.

**Storage Buffer:**

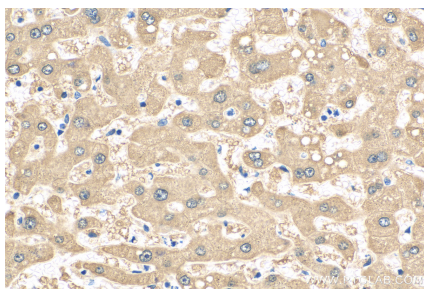
PBS with 0.02% sodium azide and 50% glycerol pH 7.3.

Aliquoting is unnecessary for -20°C storage

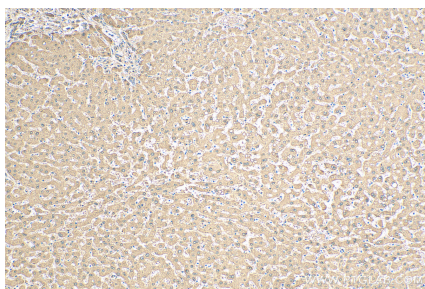
## Selected Validation Data



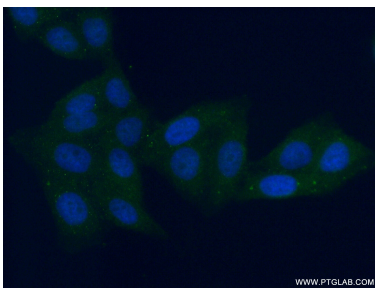
Various lysates were subjected to SDS PAGE followed by western blot with 21602-1-AP (ALDH8A1 antibody) at dilution of 1:2500 incubated at room temperature for 1.5 hours.



Immunohistochemical analysis of paraffin-embedded human hepatocirrhosis tissue slide using 21602-1-AP (ALDH8A1 antibody) at dilution of 1:200 (under 40x lens). Heat mediated antigen retrieval with Tris-EDTA buffer (pH 9.0).



Immunohistochemical analysis of paraffin-embedded human hepatocirrhosis tissue slide using 21602-1-AP (ALDH8A1 antibody) at dilution of 1:200 (under 10x lens). Heat mediated antigen retrieval with Tris-EDTA buffer (pH 9.0).



Immunofluorescent analysis of (-20°C Ethanol) fixed HepG2 cells using 21602-1-AP (ALDH8A1 antibody) at dilution of 1:50 and Alexa Fluor 488-conjugated AffiniPure Goat Anti-Rabbit IgG(H+L).