

For Research Use Only

# SPATA6L Polyclonal antibody

Catalog Number: 21597-1-AP



## Basic Information

<b>Catalog Number:</b> 21597-1-AP	<b>GenBank Accession Number:</b> BC036349	<b>Purification Method:</b> Antigen affinity purification
<b>Size:</b> 280 ug/ml	<b>GeneID (NCBI):</b> 55064	<b>Recommended Dilutions:</b> WB 1:500-1:1000
<b>Source:</b> Rabbit	<b>UNIPROT ID:</b> Q8N4H0	
<b>Isotype:</b> IgG	<b>Full Name:</b> chromosome 9 open reading frame 68	
<b>Immunogen Catalog Number:</b> AG16193	<b>Calculated MW:</b> 392 aa, 45 kDa	
	<b>Observed MW:</b> 42 kDa	

## Applications

<b>Tested Applications:</b> WB, ELISA	<b>Positive Controls:</b> WB : HepG2 cells,
<b>Species Specificity:</b> human	

## Background Information

SPATA6L, encoding a spermatogenesis-associated 6-like protein (SPATA6L), is predicted to be located in the spermatid junctions and involved in spermatogenesis, and is considered to be a differentially expressed gene associated with male sex reversal; however, its molecular function remains unknown. In addition, an important paralogous homologue of SPATA6L is SPATA6, which is required for the correct assembly of the sperm junction components and the head-tail junction.

## Storage

**Storage:**  
Store at -20°C. Stable for one year after shipment.  
**Storage Buffer:**  
PBS with 0.02% sodium azide and 50% glycerol pH 7.3.  
Aliquoting is unnecessary for -20°C storage

For technical support and original validation data for this product please contact:

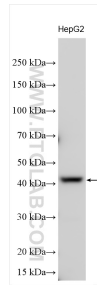
T: 4006900926

E: [Proteintech-CN@ptglab.com](mailto:Proteintech-CN@ptglab.com)

W: [ptgcn.com](http://ptgcn.com)

**This product is exclusively available under Proteintech Group brand and is not available to purchase from any other manufacturer.**

## Selected Validation Data



Various lysates were subjected to SDS PAGE followed by western blot with 21597-1-AP (SPATA6L antibody) at dilution of 1:800 incubated at room temperature for 1.5 hours.