

For Research Use Only

# SUGCT Polyclonal antibody, PBS Only

Catalog Number: 21589-1-PBS



## Basic Information

Catalog Number:

21589-1-PBS

Source:

Rabbit

Isotype:

IgG

Immunogen Catalog Number:

AG16159

GenBank Accession Number:

BC098318

GeneID (NCBI):

79783

UNIPROT ID:

Q9HAC7

Full Name:

chromosome 7 open reading frame 10

Calculated MW:

471 aa, 51 kDa

Observed MW:

48-55 kDa

Purification Method:

Antigen affinity purification

## Applications

Tested Applications:

WB, IHC, Indirect ELISA

Species Specificity:

human, mouse, rat

## Background Information

C7orf10 is also named as SUGCT, DERP13 and belongs to the CaiB/BaiF CoA-transferase family. It may function as part of a multiunit enzyme complex (A), similar to the alpha-ketoglutarate dehydrogenase system, or as the second of two independent enzymes, the first of which decarboxylates alpha-ketoadipate to glutarate (B). This protein has 4 isoforms produced by alternative splicing with the molecular weight from 43 kDa to 51 kDa.

## Storage

Storage:

Store at -80°C.

**The product is shipped with ice packs. Upon receipt, store it immediately at -80°C**

Storage Buffer:

PBS only, pH7.3

For technical support and original validation data for this product please contact:

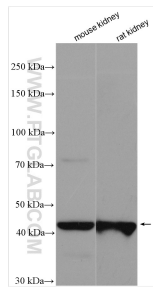
T: 4006900926

E: [Proteintech-CN@ptglab.com](mailto:Proteintech-CN@ptglab.com)

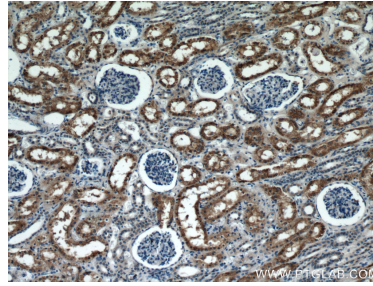
W: [ptgcn.com](http://ptgcn.com)

**This product is exclusively available under Proteintech Group brand and is not available to purchase from any other manufacturer.**

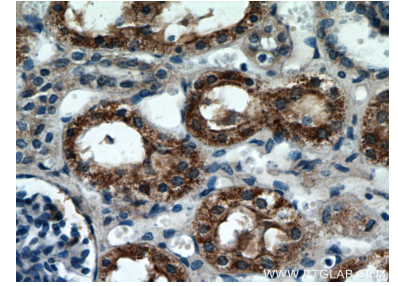
## Selected Validation Data



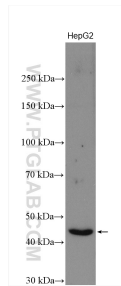
Various lysates were subjected to SDS PAGE followed by western blot with 21589-1-AP (C7orf10 antibody) at dilution of 1:2000 incubated at room temperature for 1.5 hours. This data was developed using the same antibody clone with 21589-1-PBS in a different storage buffer formulation.



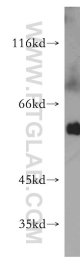
Immunohistochemical analysis of paraffin-embedded human kidney using 21589-1-AP (C7orf10 antibody) at dilution of 1:50 (under 10x lens). This data was developed using the same antibody clone with 21589-1-PBS in a different storage buffer formulation.



Immunohistochemical analysis of paraffin-embedded human kidney using 21589-1-AP (C7orf10 antibody) at dilution of 1:50 (under 40x lens). This data was developed using the same antibody clone with 21589-1-PBS in a different storage buffer formulation.



HepG2 cells were subjected to SDS PAGE followed by western blot with 21589-1-AP (C7orf10 antibody) at dilution of 1:1000 incubated at room temperature for 1.5 hours. This data was developed using the same antibody clone with 21589-1-PBS in a different storage buffer formulation.



mouse skeletal muscle tissue were subjected to SDS PAGE followed by western blot with 21589-1-AP (C7orf10 antibody) at dilution of 1:500 incubated at room temperature for 1.5 hours. This data was developed using the same antibody clone with 21589-1-PBS in a different storage buffer formulation.