

For Research Use Only

LRRC10 Polyclonal antibody

Catalog Number: 21575-1-AP



Basic Information

Catalog Number:

21575-1-AP

Size:

300 µg/ml

Source:

Rabbit

Isotype:

IgG

Immunogen Catalog Number:

AG16117

GenBank Accession Number:

BC106893

GeneID (NCBI):

376132

UNIPROT ID:

Q5BKY1

Full Name:

leucine rich repeat containing 10

Calculated MW:

277 aa, 32 kDa

Observed MW:

32 kDa

Purification Method:

Antigen affinity purification

Recommended Dilutions:

WB 1:1000-1:4000

Applications

Tested Applications:

WB, ELISA

Species Specificity:

human, mouse, rat

Positive Controls:

WB : mouse brain tissue, mouse stomach tissue

Background Information

Storage

Storage:

Store at -20°C. Stable for one year after shipment.

Storage Buffer:

PBS with 0.02% sodium azide and 50% glycerol pH 7.3.

Aliquoting is unnecessary for -20°C storage

For technical support and original validation data for this product please contact:

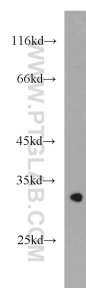
T: 4006900926

E: Proteintech-CN@ptglab.com

W: ptgcn.com

This product is exclusively available under Proteintech Group brand and is not available to purchase from any other manufacturer.

Selected Validation Data



mouse brain tissue were subjected to SDS PAGE followed by western blot with 21575-1-AP (LRRC10 antibody) at dilution of 1:2000 incubated at room temperature for 1.5 hours.