

For Research Use Only

ZEB1 Polyclonal antibody

Catalog Number: 21544-1-AP

Featured Product

249 Publications



Basic Information

Catalog Number:

21544-1-AP

Concentration:

700 ug/ml

Source:

Rabbit

Isotype:

IgG

Immunogen Catalog Number:

AG16204

GenBank Accession Number:

BC112392

GeneID (NCBI):

6935

UNIPROT ID:

P37275

Full Name:

zinc finger E-box binding homeobox 1

Calculated MW:

1125 aa, 124 kDa

Observed MW:

190-210 kDa

Purification Method:

Antigen affinity purification

Recommended Dilutions:

WB 1:500-1:2000

IP 0.5-4.0 ug for 1.0-3.0 mg of total protein lysate

Applications

Tested Applications:

WB, IP, ELISA

Cited Applications:

WB, IHC, IF, IP, CoIP, ChIP

Species Specificity:

human, mouse

Cited Species:

human, mouse, rat, pig

Positive Controls:

WB: Jurkat cells, MCF-7 cells, PC-3 cells, COLO 320 cells, MDA-MB-453s cells, mouse colon tissue

IP: COLO 320 cells,

Background Information

ZEB1(zinc-finger-enhancer binding protein 1), which is a member of the Zinc finger-Homeobox (ZFH) family of repressors, acts as a transcriptional repressor that inhibits interleukin-2 (IL-2) gene expression. Depending on the quantity of cDNA and on the cell type, ZEB1 can enhance or repress the promoter activity of the ATP1A1 gene. Represses E-cadherin promoter and induces an epithelial-mesenchymal transition (EMT) by recruiting SMARCA4/BRG1. Represses BCL6 transcription in the presence of the corepressor CTBP1. Positively regulates neuronal differentiation. The calculated molecular weight of ZEB1 is 124 kDa, but the post-phosphorylation of protein is about 190-210 kDa. This is a rabbit polyclonal antibody raised against part of the full length of ZEB1 of human.

Notable Publications

Author	Pubmed ID	Journal	Application
Caixia Yu	36181978	Virus Res	WB
Chenlong Li	31558707	Cell Death Dis	WB
Duo Shi	34555439	Virus Res	WB

Storage

Storage:

Store at -20°C. Stable for one year after shipment.

Storage Buffer:

PBS with 0.02% sodium azide and 50% glycerol, pH7.3

Aliquoting is unnecessary for -20°C storage

For technical support and original validation data for this product please contact:

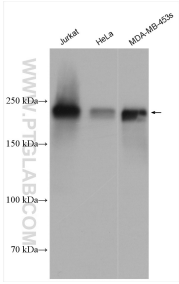
T: 4006900926

E: Proteintech-CN@ptglab.com

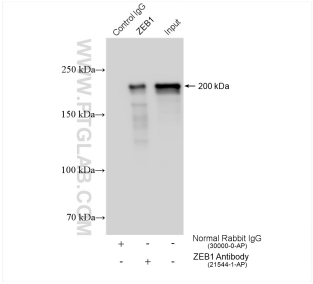
W: ptgcn.com

This product is exclusively available under Proteintech Group brand and is not available to purchase from any other manufacturer.

Selected Validation Data



Various lysates were subjected to SDS PAGE followed by western blot with 21544-1-AP (ZEB1 antibody) at dilution of 1:1000 incubated at room temperature for 1.5 hours.



IP result of anti-ZEB1 (IP:21544-1-AP, 4ug; Detection:21544-1-AP 1:8000) with COLO 320 cells lysate 1320 ug.