

For Research Use Only

# ISM2 Polyclonal antibody

Catalog Number: 21540-1-AP



## Basic Information

Catalog Number: 21540-1-AP	GenBank Accession Number: BC101020	Purification Method: Antigen affinity purification
Size: 400 µg/ml	GeneID (NCBI): 145501	Recommended Dilutions: WB 1:500-1:1000
Source: Rabbit	UNIPROT ID: Q6H9L7	IHC 1:20-1:200
Isotype: IgG	Full Name: isthmin 2 homolog (zebrafish)	IF/ICC 1:20-1:200
Immunogen Catalog Number: AG16187	Calculated MW: 571 aa, 64 kDa	
	Observed MW: 65 kDa, 55 kDa	

## Applications

Tested Applications:  
WB, IHC, IF/ICC, ELISA

Species Specificity:  
human, mouse

**Note-IHC: suggested antigen retrieval with  
TE buffer pH 9.0; (\*) Alternatively, antigen  
retrieval may be performed with citrate  
buffer pH 6.0**

Positive Controls:

WB : L02 cells, mouse kidney tissue, mouse pancreas  
tissue, mouse skin tissue

IHC : human placenta tissue, human kidney tissue

IF/ICC : L02 cells,

## Background Information

### Storage

Storage:  
Store at -20°C. Stable for one year after shipment.  
Storage Buffer:  
PBS with 0.02% sodium azide and 50% glycerol pH 7.3.  
Aliquoting is unnecessary for -20°C storage

For technical support and original validation data for this product please contact:

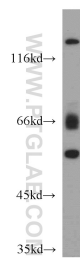
T: 4006900926

E: [Proteintech-CN@ptglab.com](mailto:Proteintech-CN@ptglab.com)

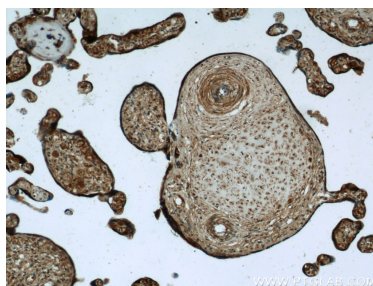
W: [ptgcn.com](http://ptgcn.com)

This product is exclusively available under Proteintech Group brand and is not available to purchase from any other manufacturer.

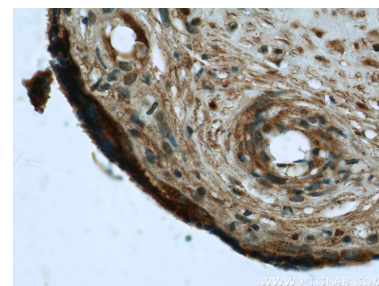
## Selected Validation Data



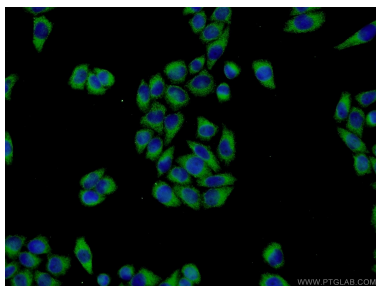
L02 cells were subjected to SDS PAGE followed by western blot with 21540-1-AP (ISM2 antibody) at dilution of 1:500 incubated at room temperature for 1.5 hours.



Immunohistochemical analysis of paraffin-embedded human placenta tissue slide using 21540-1-AP (ISM2 Antibody) at dilution of 1:50 (under 10x lens).



Immunohistochemical analysis of paraffin-embedded human placenta tissue slide using 21540-1-AP (ISM2 Antibody) at dilution of 1:50 (under 40x lens).



Immunofluorescent analysis of L02 cells using 21540-1-AP (ISM2 antibody) at dilution of 1:50 and Alexa Fluor 488-conjugated AffiniPure Goat Anti-Rabbit IgG(H+L).